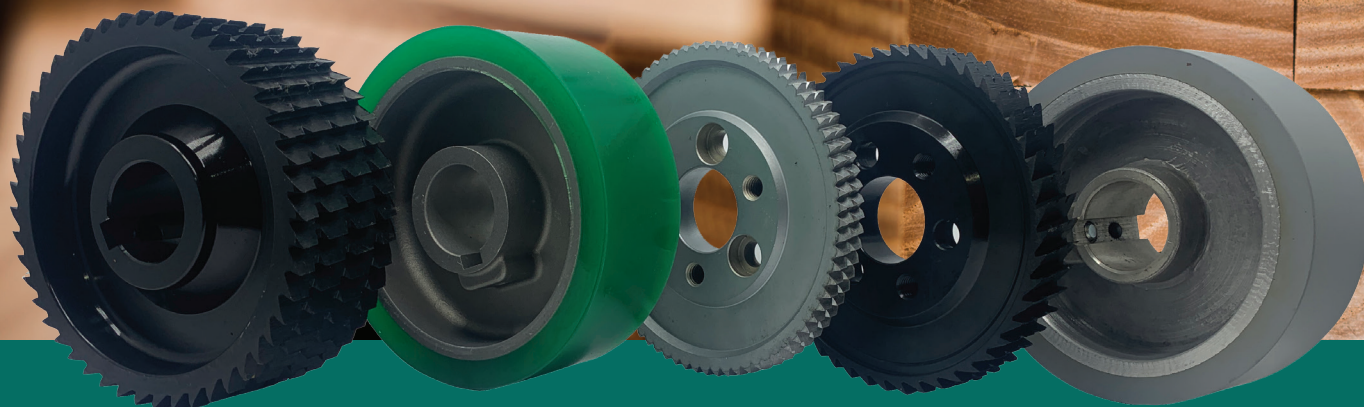


FEED ROLLERS



Polyurethane Keyway

Application

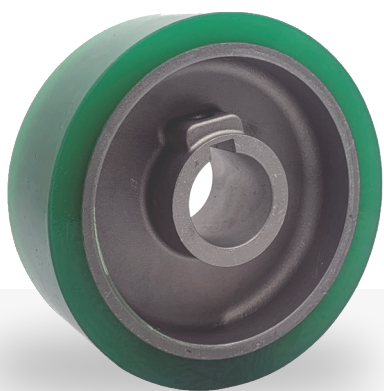
Joinery and Furniture applications
For use in most Moulding machines
35mm shaft with keyway

Advantages

Can be positioned perfectly along the shaft to suit the required timber profile
Easily add extra rollers or remove to suit timber width machined

Technical

Available in 140, 170, 220mm diameter as standard
Available in other diameters for custom requirements
Widths from 15mm – 50mm
Available in bolt holes

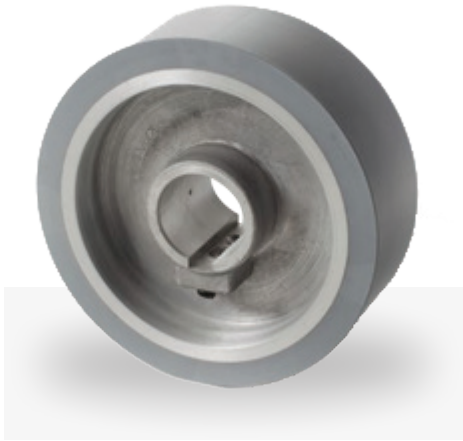


Accurate

accurateaustralia.com
sales@accurateaustralia.com | Freecall 1800 077 862



@AccurateANZ



Rubber Roller

Application

Used in high production moulding applications

Advantages

Made from a softer rubber compound for a stronger grip

Used for small runs

Technical

140mm & 170mm diameter

Custom-made diameters available

Widths from 15mm – 50mm



Heavy Duty Steel Roller

Application

Used in most moulding machines in a variety of joinery and furniture applications

Advantages

Can be positioned perfectly along the shaft to suit the required timber profile

Simply bolt on additional rollers or remove to suit the width of material

Technical

140, 170, 220mm diameters

Custom-made diameters available

Widths from 15mm – 50mm

Available in bolt holes



Chromed Steel Feed Roller

Application

Used in Hardwood Sawmills

Excellent for Blackbutt, Ironbark, Spotted Gum, Blue Gum, Tallowood

Advantages

Due to the distance between the teeth this roller does not become 'clogged' when in use

Technical

140, 170, 220mm diameters

Widths from 15mm – 50mm

Available in bolt holes



Accurate

accurateaustralia.com

sales@accurateaustralia.com | Freecall 1800 077 862

@AccurateANZ