

## Cutterheads & Sleeves Accurate®

HSK Serrated Cutterheads	57
HSK Spiral Cutterheads	58
HSK Centrolock Cutterheads	58
Conventional Cutterheads	59
Hydro Cutterheads	61
Top Nail Overlay	64
Top Nail Flooring	65
Secret Nail Overlay	66
Secret Nail Flooring	67
TOK Cutterheads	68
Pencil Round	69
Adjustable Groove Cutterheads	70
Fixed Cutterheads	70
Multi-Angle Cutterheads	71
Joint Cutterheads	71
Lock Mitre Joint Cutterheads	72
Multi-Profile Cutterheads	73
Stackable Planing Cutterheads	73
Braised Tip	74
Finger Joint Cutterheads	78
Braised Finger Joint Cutterheads	81
Sleeves	82
High Speed Cutterheads	83



HSK Serrated Cutterheads

Powerlock

Application

- For moulding and planing applications.
- Can accommodate knife steel thickness 5mm-10mm.
- Supplied without knives.
- Balance at 12000 RPM.

Z=2/4

Ø D (mm)	Width	Bore	Z	Description	Rotation
90	60	HSK	2/4	Serrated	LH / RH
90	80	HSK	2/4	Serrated	LH / RH
90	100	HSK	2/4	Serrated	LH / RH
90	130	HSK	2/4	Serrated	LH / RH
90	150	HSK	2/4	Serrated	LH / RH
90	170	HSK	2/4	Serrated	LH / RH
90	190	HSK	2/4	Serrated	LH / RH
90	240	HSK	2/4	Serrated	LH / RH

Z=6

Ø D (mm)	Width	Bore	Z	Description	Rotation
115	60	HSK	6	Serrated	LH / RH
115	80	HSK	6	Serrated	LH / RH
115	100	HSK	6	Serrated	LH / RH
115	130	HSK	6	Serrated	LH / RH
115	150	HSK	6	Serrated	LH / RH
115	170	HSK	6	Serrated	LH / RH
115	190	HSK	6	Serrated	LH / RH
115	240	HSK	6	Serrated	LH / RH

Available in other sizes on request.

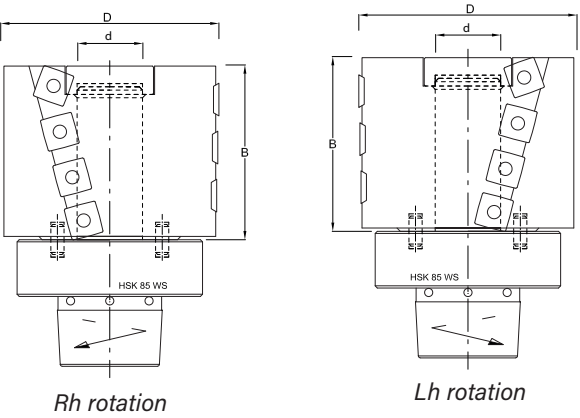


HSK Spiral Cutterheads

Application

- For planing applications.
- Supplied with Tungsten Carbide.
- Balance at 12000 RPM.
- Option between 15 x 15 or 30 x 12 knives.

Ø D (mm)	Width	Bore	Z	Description	Rotation
100	60	HSK	4	Spiral	LH / RH
100	80	HSK	4	Spiral	LH / RH
100	100	HSK	4	Spiral	LH / RH
100	130	HSK	4	Spiral	LH / RH
100	150	HSK	4	Spiral	LH / RH
100	170	HSK	4	Spiral	LH / RH
100	190	HSK	4	Spiral	LH / RH
100	240	HSK	4	Spiral	LH / RH

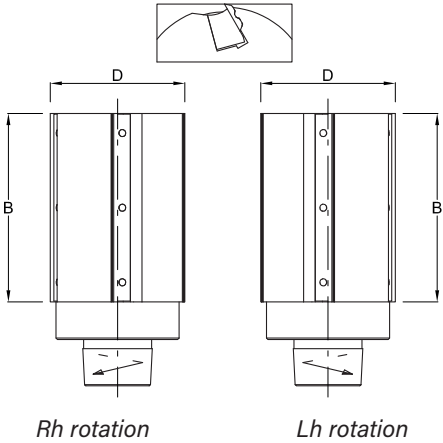


HSK Centrolock Cutterheads

Application

- Planing cutterhead with reversible interchangeable knives suitable for soft and hard wood, on automatic moulding and profiling machines. The centrifugal fixing system allows fast and precise knife change. The tool may fit knives in HS or solid HW.
- The planing cutterheads are equipped with HS knives. HW knives are available on request.
- Balance at 12000 RPM.

Ø D (mm)	Width	Bore	Z	Description	Rotation
93	80	HSK	2/4	Centrolock	LH / RH
93	100	HSK	2/4	Centrolock	LH / RH
93	130	HSK	2/4	Centrolock	LH / RH
93	150	HSK	2/4	Centrolock	LH / RH
93	170	HSK	2/4	Centrolock	LH / RH
93	190	HSK	2/4	Centrolock	LH / RH
93	240	HSK	2/4	Centrolock	LH / RH



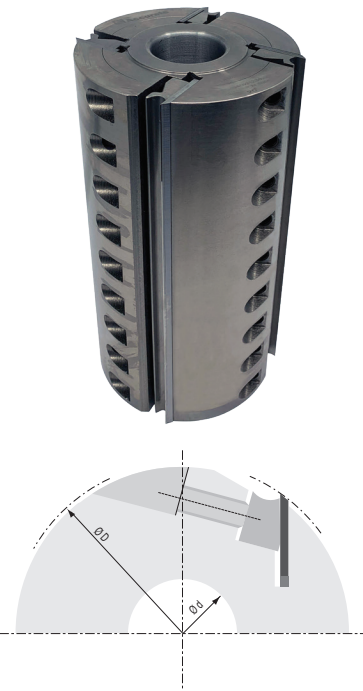
# Conventional Cutterheads

## Planing

### Application

- Planing cutterhead fitted with HSS planing knives.
- Can accommodate 30 x 3mm, 30 x 4mm, 35 x 3mm, 35 x 4mm planing steel.

Ø D (mm)	Width	Ød (mm)	Z
125	100	40	4
125	130	40	4
125	150	40	4
125	170	40	4
125	180	40	4
125	230	40	4
125	240	40	4
125	250	40	4

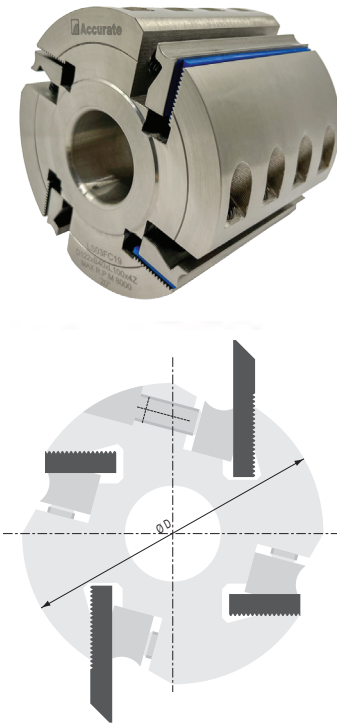


## Serrated

### Application

- For moulding and planing applications.
- Can accommodate knife steel thickness 4mm-10mm.
- Supplied without knives.

Ø D (mm)	Width	Ød (mm)	Z
122	40	40	4
122	60	40	4
122	100	40	4
122	130	40	4
122	150	40	4
122	180	40	4
122	230	40	4



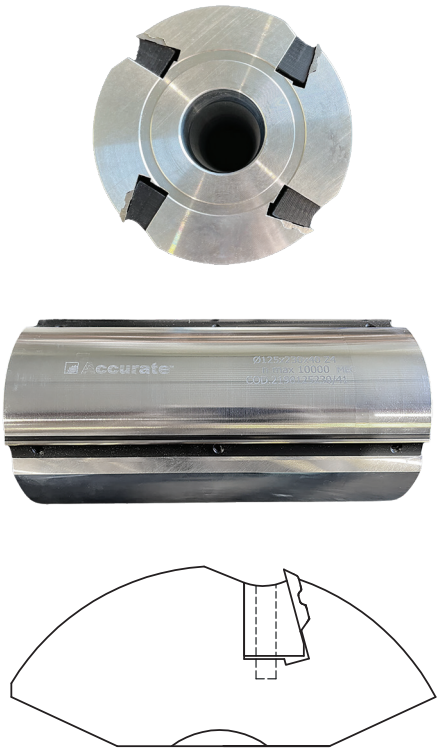
# Conventional Cutterheads

## Centrolock Turnover Knife System

### Application

- Planing cutterhead with reversible interchangeable knives suitable for soft and hard wood, on automatic moulding and profiling machines. The centrifugal fixing system allows fast and precise knife change. The tool may fit knives in HS or solid HW.
- The planing cutterheads are equipped with HS knives. HW knives are available on request.

Ø D (mm)	Width	Ød (mm)	Z
125	100	40	4
125	120	40	4
125	130	40	4
125	150	40	4
125	170	40	4
125	180	40	4
125	230	40	4
125	240	40	4
125	250	40	4



## Spiral

### Application

- Planing cutterhead with reversible interchangeable knives suitable for soft and hard wood, on automatic moulding and profiling machines.
- Ability to utilise fine grade Tungsten Carbide for extremely long tool life.
- Supplied with Tungsten Carbide.
- No requirement for grinding machines.

Ø D (mm)	Width	Bore	Z
125	60	40	6
125	100	40	6
125	130	40	6
125	160	40	6
125	180	40	6
125	230	40	6
125	240	40	6
125	260	40	6



# Hydro Cutterheads

## Planing

### Application

- For use on high-speed jointed moulders for precision planing of solid woods.
- Can accommodate 30 x 3mm, 30 x 4mm, 35 x 3mm, 35 x 4mm planing steel.
- Standard knife pockets are 27° with 12° available upon request.
- Working pressure: 300 – 350 bars.
- Max pressure: 400 bars.
- Supplied with HSS planing knives.

### D150

Ø D (mm)	Width	Bore	Z
150	60	50	4/6
150	100	50	4/6
150	130	50	4/6
150	150	50	4/6
150	180	50	4/6
150	230	50	4/6
150	260	50	4/6
150	310	50	4/6

### D163

Ø D (mm)	Width	Bore	Z
163	60	50	6/8
163	100	50	6/8
163	130	50	6/8
163	150	50	6/8
163	180	50	6/8
163	230	50	6/8
163	260	50	6/8
163	310	50	6/8

### D203

Ø D (mm)	Width	Bore	Z
203	60	50	10/12
203	100	50	10/12
203	130	50	10/12
203	150	50	10/12
203	180	50	10/12
203	230	50	10/12
203	260	50	10/12
203	310	50	10/12



# Hydro Cutterheads

## Serrated

### Application

- For use on high-speed jointed moulders for precision profiling of solid woods.
- Can accommodate knife steel thickness 4mm-10mm.
- Standard corrugated knife pocket are 20° with 12° available upon request.
- Working pressure: 300 – 350 bars.
- Max pressure: 400 bars.
- Supplied without knives.

### D150

Ø D (mm)	Width	Bore	Z
150	60	50	4/6
150	100	50	4/6
150	130	50	4/6
150	150	50	4/6
150	180	50	4/6
150	230	50	4/6
150	260	50	4/6
150	310	50	4/6

### D195

Ø D (mm)	Width	Bore	Z
195	60	50	10
195	100	50	10
195	130	50	10
195	150	50	10
195	180	50	10
195	230	50	10
195	260	50	10
195	310	50	10

### D163

Ø D (mm)	Width	Bore	Z
163	60	50	6/8
163	100	50	6/8
163	130	50	6/8
163	150	50	6/8
163	180	50	6/8
163	230	50	6/8
163	260	50	6/8
163	310	50	6/8

### D215

Ø D (mm)	Width	Bore	Z
215	60	50	12
215	100	50	12
215	130	50	12
215	150	50	12
215	180	50	12
215	230	50	12
215	260	50	12
215	310	50	12



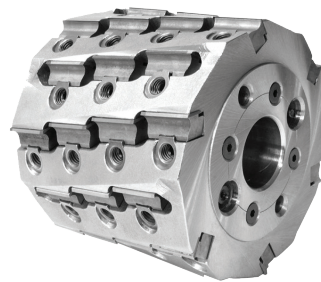


## Hydro Cutterheads

## Spiral

## Application

- Planing cutterhead with reversible interchangeable knives suitable for soft and hard wood, on automatic moulding and profiling machines.
- Ability to utilise fine grade Tungsten Carbide for extremely long tool life.
- Working pressure: 300 – 350 bars.
- Max pressure: 400 bars.
- Supplied with Tungsten Carbide.
- No requirement for grinding machines.



## D150

Ø D (mm)	Width	Bore	Z
150	60	50	6
150	100	50	6
150	130	50	6
150	150	50	6
150	180	50	6
150	230	50	6
150	260	50	6
150	310	50	6

## D160

Ø D (mm)	Width	Bore	Z
160	60	50	10
160	100	50	10
160	130	50	10
160	150	50	10
160	180	50	10
160	230	50	10
160	260	50	10
160	310	50	10

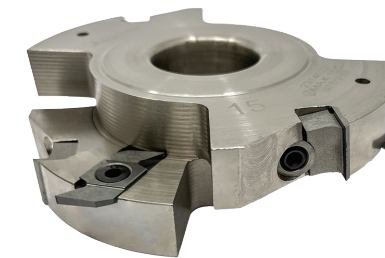
## D200

Ø D (mm)	Width	Bore	Z
200	60	50	16
200	100	50	16
200	130	50	16
200	150	50	16
200	180	50	16
200	230	50	16
200	260	50	16
200	310	50	16

## Top Nail Overlay

## Application

- Cutterheads that are adjustable by means of spacing collars in order to obtain floor and wall panel profiles of the desired width on moulding machines.
- The sets are supplied with assembly bush.
- Can perform from 12mm.



## Standard

## Single VJ

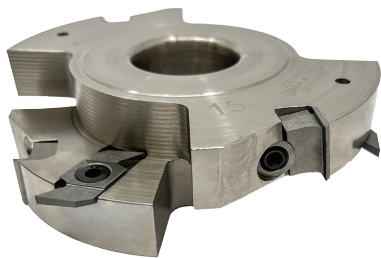
## Double VJ



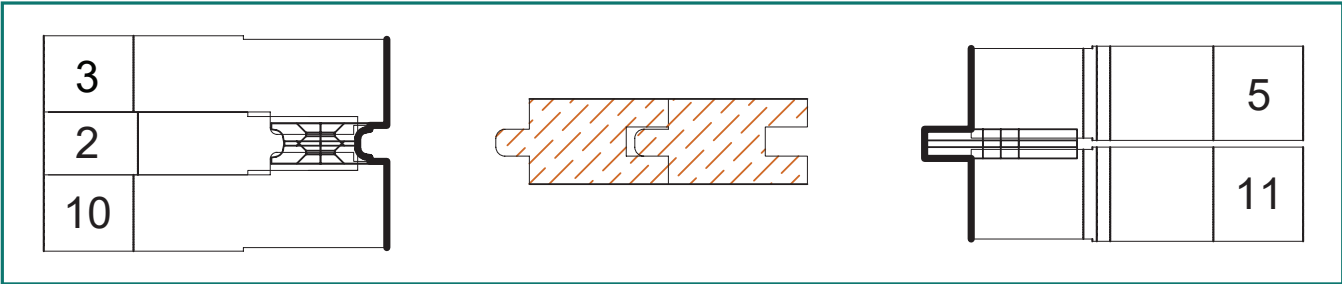
# Top Nail Flooring

## Application

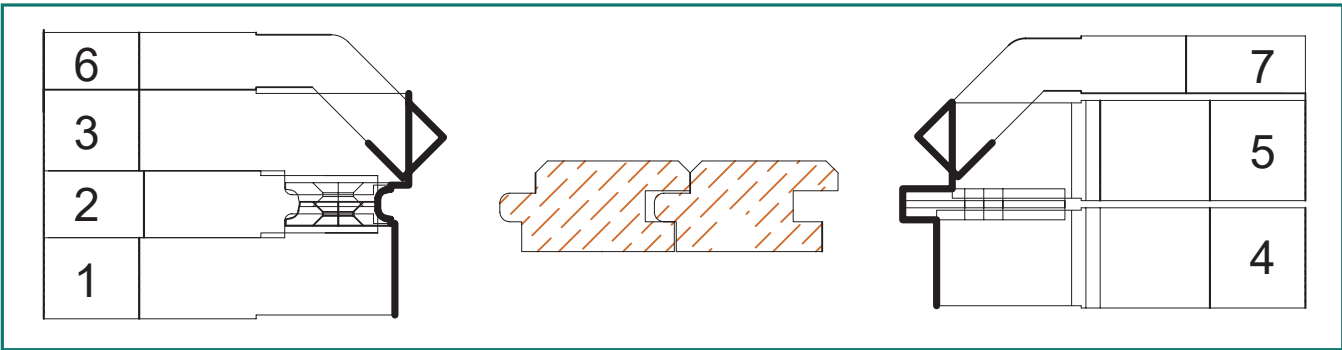
- Cutterheads that are adjustable by means of spacing collars in order to obtain floor and wall panel profiles of the desired width on moulding machines.
- The sets are supplied with assembly bush.
- Can perform from 15mm.



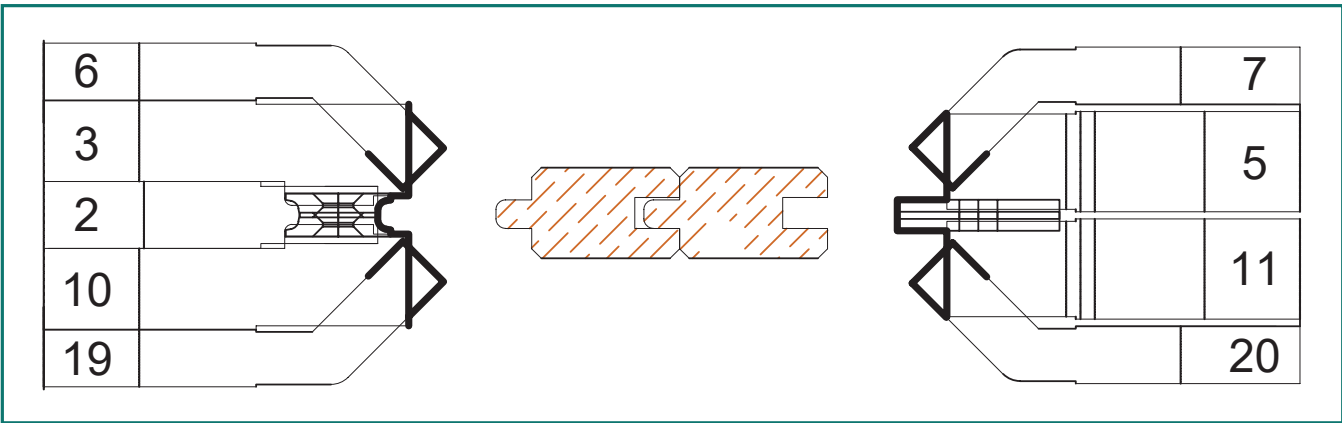
## Standard



## Single VJ



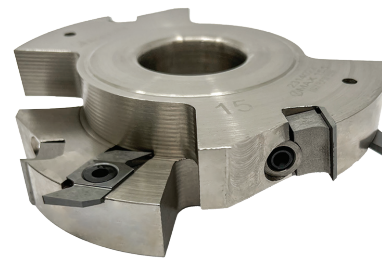
## Double VJ



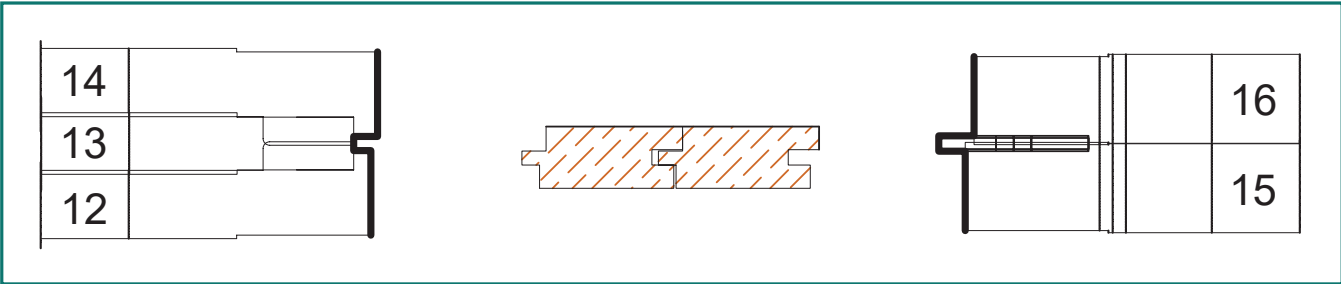
# Secret Nail Overlay

## Application

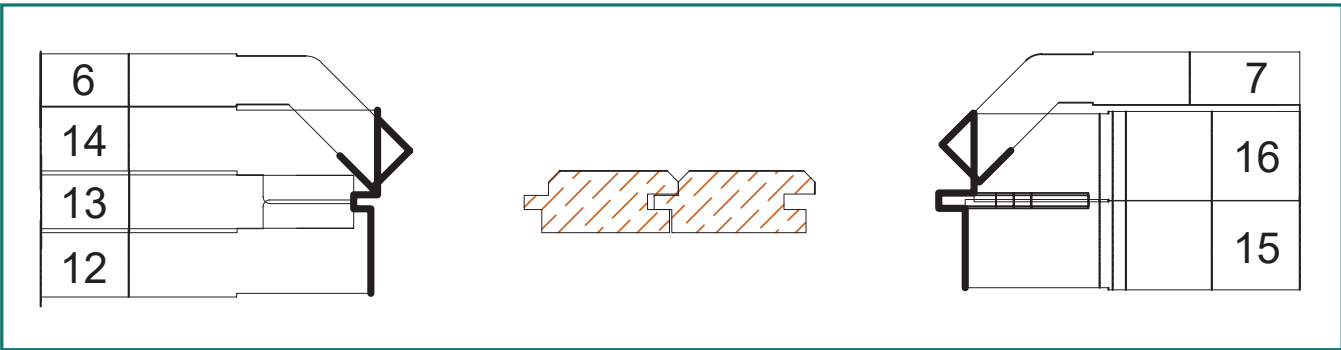
- Cutterheads that are adjustable by means of spacing collars in order to obtain floor and wall panel profiles of the desired width on moulding machines.
- The sets are supplied with assembly bush.
- Can perform from 12mm.



## Standard



## Single VJ

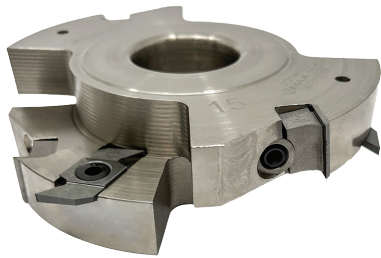




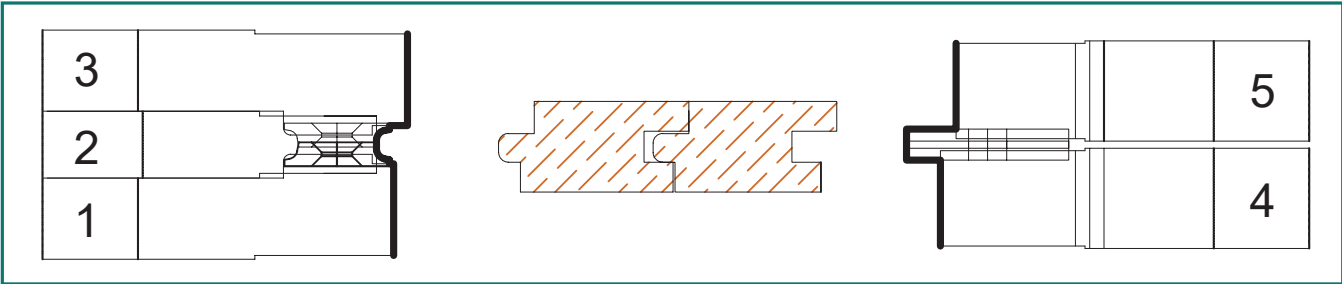
# Secret Nail Flooring

## Application

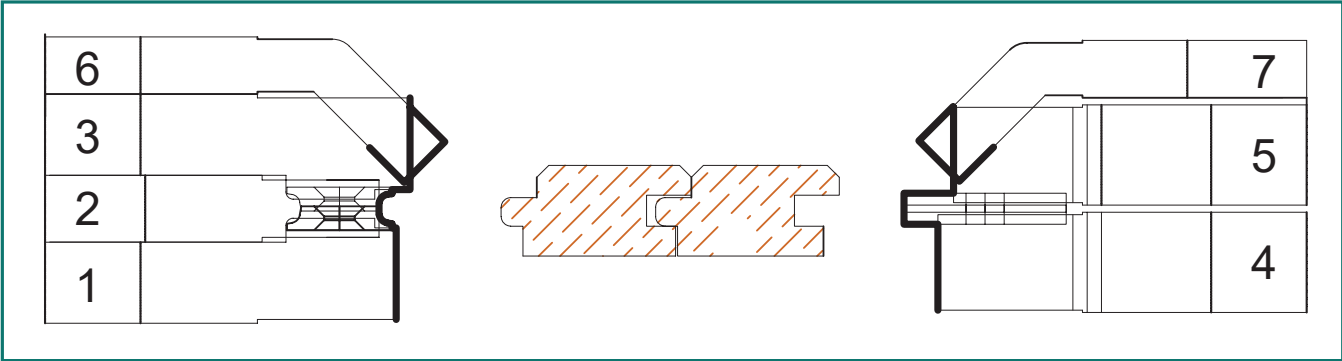
- Cutterheads that are adjustable by means of spacing collars in order to obtain floor and wall panel profiles of the desired width on moulding machines.
- The sets are supplied with assembly bush.
- Can perform from 15mm.



## Standard



## Single VJ



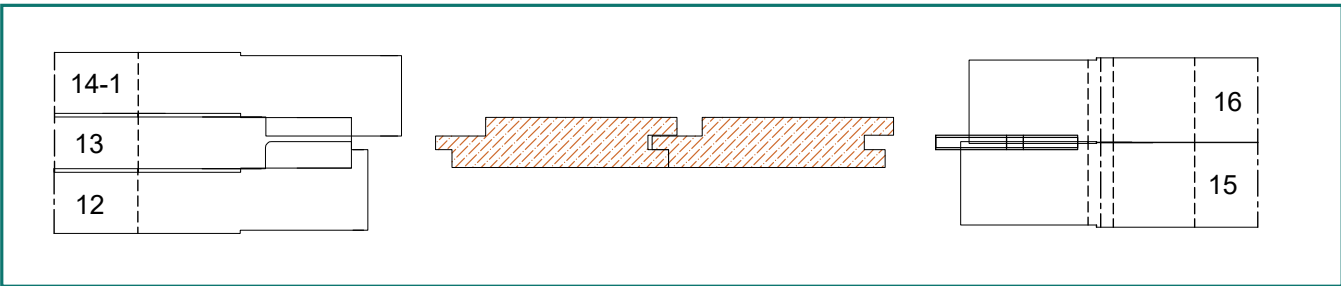
# TOK Cutterheads

## Shiplap

### Application

- For internal cladding or external cladding with a shadow line.
- To be used on a 4-sided moulder.

### Overlay Cutterset

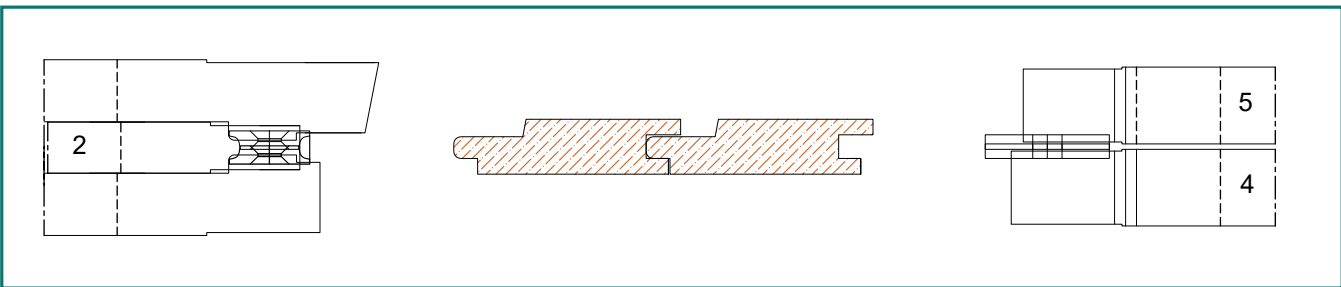


## VJ Shiplap

### Application

- For internal cladding or external cladding with a arise.
- To be used on a 4-sided moulder.

### 19mm Secret Nail Cutterset





Pencil Round

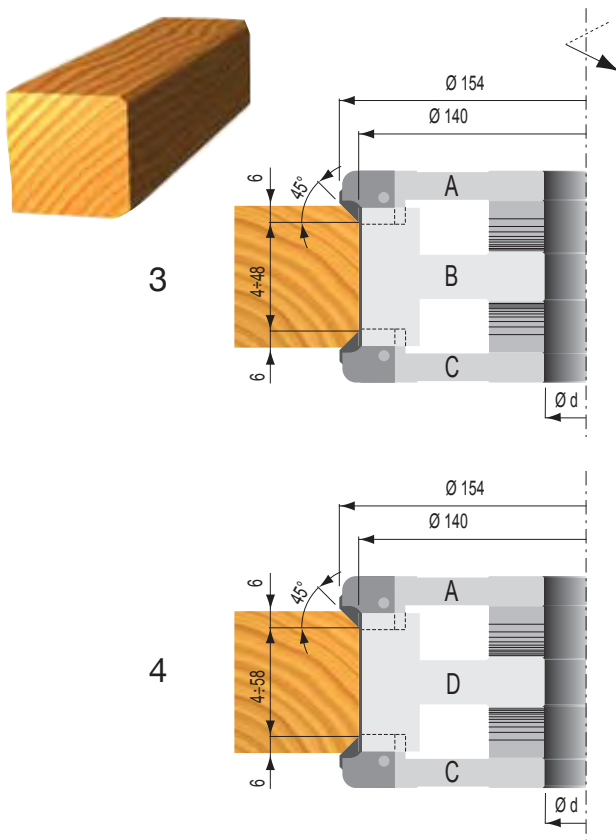
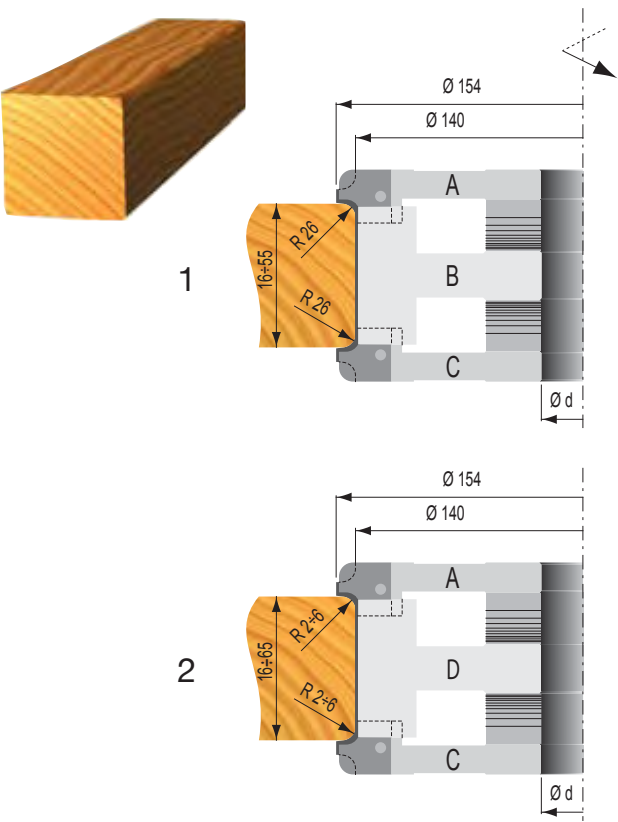
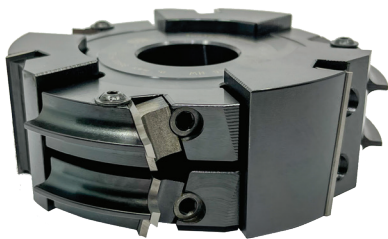
Application

- Cutterhead set consisting of 3 elements.
- Element A and C are profiled and allow to 40° chamfer on one side and cut round profile on the other (R=2-3-4-5-6 mm).
- The central elements B and D rebate the straight part of the workpiece and are manufactured with shear angle.
- When order is placed, state the type of knife required.

Ø D (mm)	Width	Ø d (mm)	Z
155	15-50	40	3+3+3
155	15-50	50	3+3+3
180	15-50	60	4+4+4

Knives

Length	Width	Thickness	Radius
21	20	2.0	2.0
21	20	2.0	3.0
21	20	2.0	4.0
21	20	2.0	5.0
21	20	2.0	6.0
21	20	2.0	45°

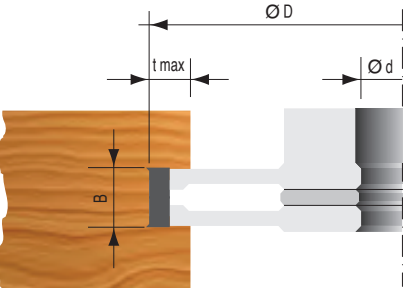


Adjustable Groove Cutterheads

Application

- Cutterhead in steel with knives and spurs in HW for making tenons and adjustable grooves (from 8 to 60mm).
- The tool is supplied complete with spacer rings.

Ø D (mm)	B (mm)	T (mm)	Ø d (mm)	Ø d max (mm)	Z	V
120	8 / 15.5	20	30	50	4	4
120	12.5 / 24	20	30	50	4	4
120	15.5 / 30	20	30	50	4	4
120	20.5 / 40	20	30	50	4	4
120	30.5 / 60	20	30	50	4	4
160	8 / 15.5	40	30	50	4	4
160	12.5 / 24	40	30	50	4	4
160	15.5 / 30	40	30	50	4	4
160	20.5 / 40	40	30	50	4	4
160	30.5 / 60	40	30	50	4	4
200	8 / 15.5	60	30	50	4	4
200	12.5 / 24	60	30	50	4	4
200	15.5 / 30	60	30	50	4	4
200	20.5 / 40	60	30	50	4	4
200	30.5 / 60	60	30	50	4	4



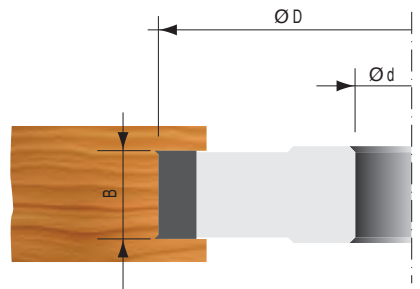
Fixed Cutterheads

Rebate

Application

- Cutterhead with HW reversible knives and spurs on both sides rebating and edging.
- Suitable for solid soft wood, chipboard, veneered and laminated panels, plywood, etc.
- The shear angle allows a better chip removal and a longer cutting-edge life.

Ø D (mm)	B (mm)	Ø d (mm)	Ø d max (mm)	Z	V
125	50	30	50	4	4
150	50	30	50	4	4
180	50	30	50	4	4



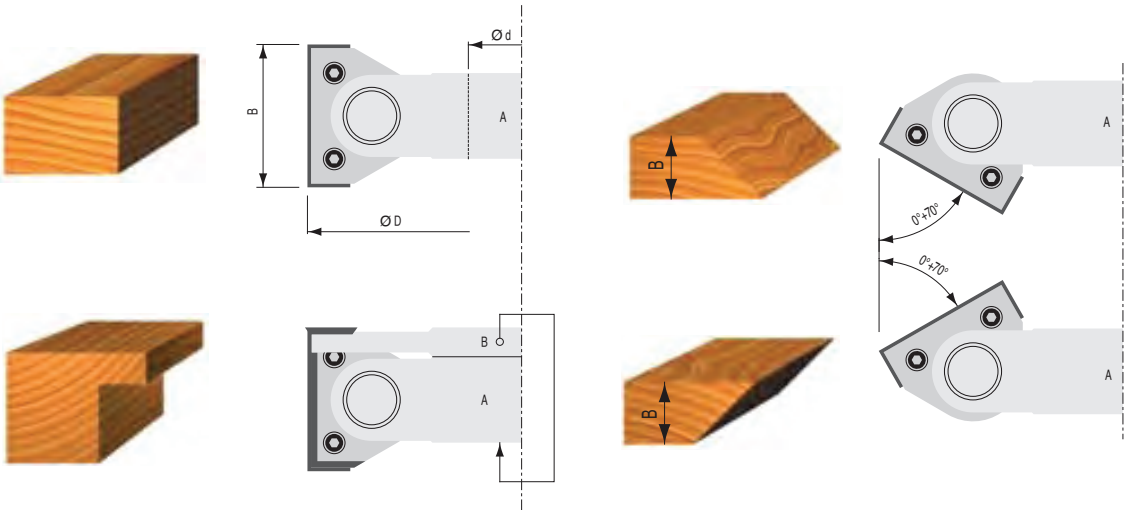
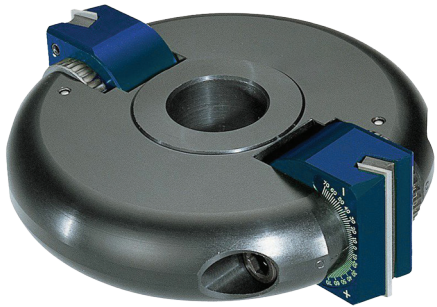


Multi-Angle Cutterheads

Application

- Cutterhead with HW reversible knives.
- The two wings are adjustable by degree from 0° to 70°.
- Due to the particular construction, this tool is of universal use.
- The tool can also be used as a rebate cutterhead if matched with element B (spur holder) and if wings are positioned at 0°.

Ø D (mm)	B (mm)	Ø d (mm)	Ø d max (mm)	Z	Type
160	50	30	40	2	A
170	50	50	50	2	A

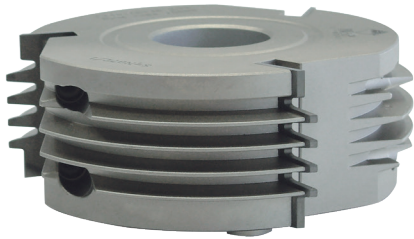


Joint Cutterheads

Application

- Tool with two cutting edges, steel body and knives in HW.
- All the heads are program-med to operate on a minimum diameter of 125mm.
- By acting on the regulating screw on the tool with the use of a graduated scale, "tight" or "loose" joints can be obtained, depending on requirements.

Ø D (mm)	B (mm)	H (mm)	T (mm)	Ø d (mm)	Ø d max (mm)	Z
140	30	14 - 26	5	30	50	4
140	30	14 - 26	10	30	50	4
140	30	14 - 26	15	30	50	4
140	40	20 - 36	5	30	50	4
140	40	20 - 36	10	30	50	4
140	40	20 - 36	15	30	50	4
140	50	26 - 46	5	30	50	4
140	50	26 - 46	10	30	50	4
140	50	26 - 46	15	30	50	4
140	60	33 - 56	5	30	50	4
140	60	33 - 56	10	30	50	4
140	60	33 - 56	15	30	50	4

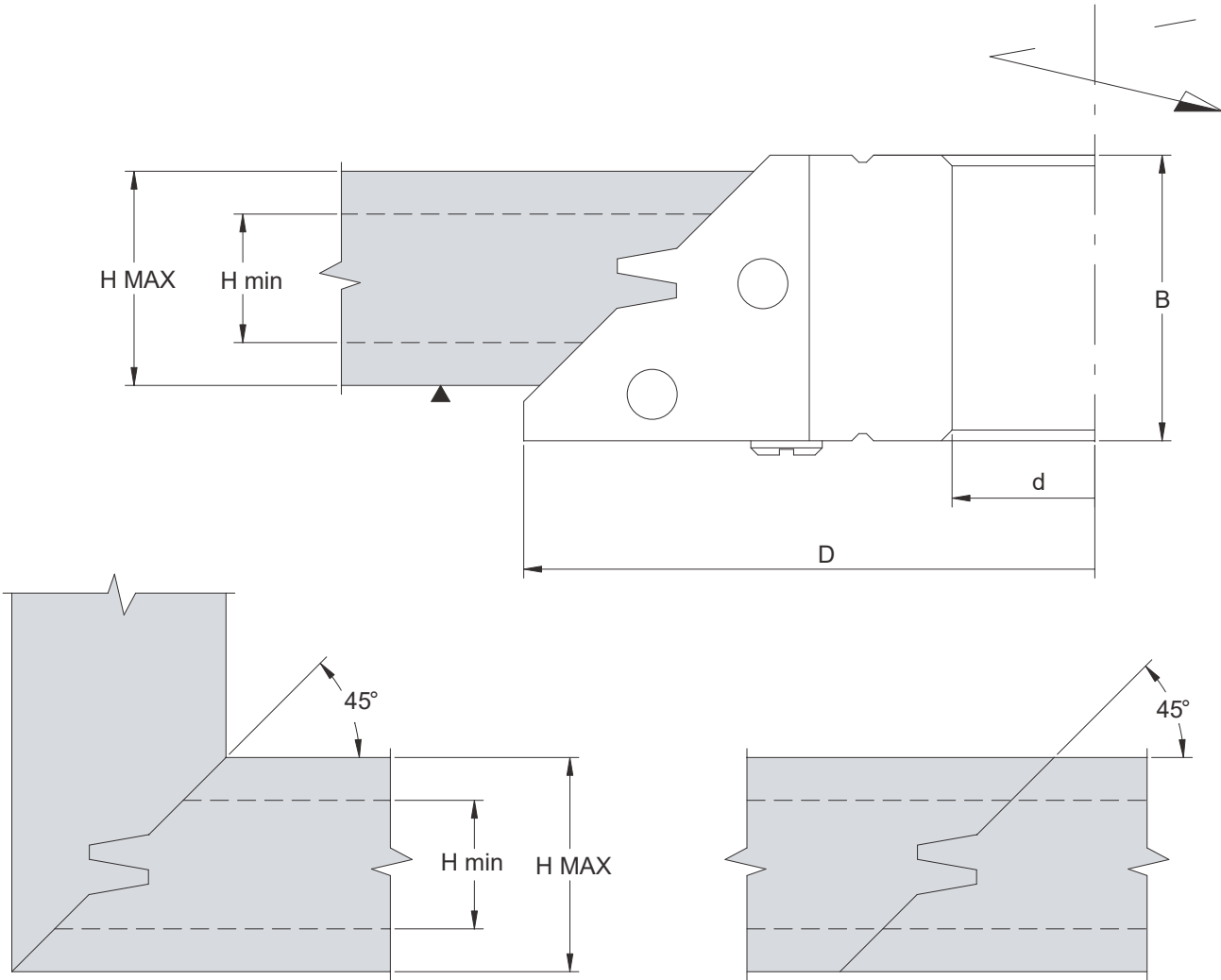


Lock Mitre Joint Cutterheads

Application

- Cutterhead with HW knives for making 45° joints on wood thicknesses, varying from minimum 13mm to a maximum of 35mm.
- The joint is obtained in two steps: first with workpiece in horizontal position and then with workpiece in vertical position.

Ø D (mm)	B (mm)	Ø d (mm)	Ø d max (mm)	Z	RPM (min-max)
170	50	30	40	2	4500 - 7800

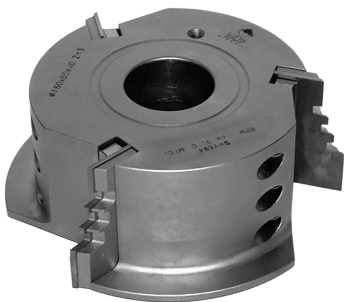
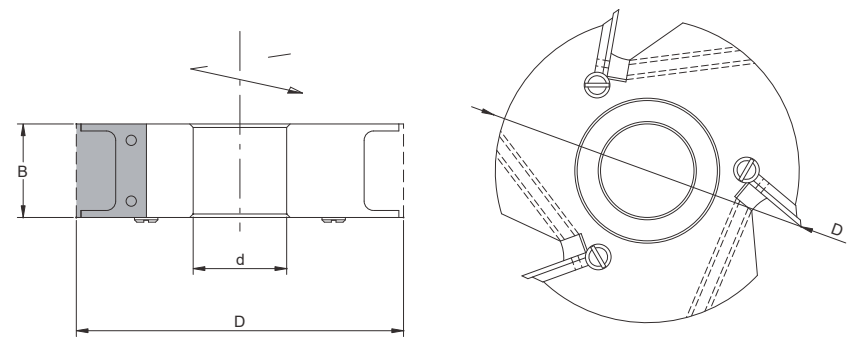


# Multi-Profile Cutterheads

## Application

- Cutterhead with HW knives for making 45° joints on wood thicknesses, varying from minimum 13mm to a maximum of 35mm.
- The joint is obtained in two steps: first with workpiece in horizontal position and then with workpiece in vertical position.

Ø D (mm)	B (mm)	Ø d (mm)	Ø d max (mm)	Z	RPM (min-max)
170	50	30	40	2	4500 - 7800

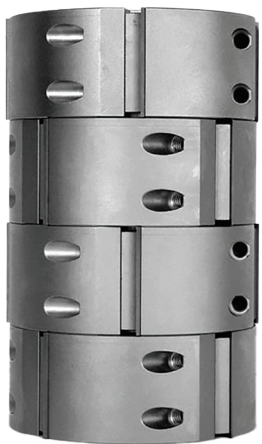
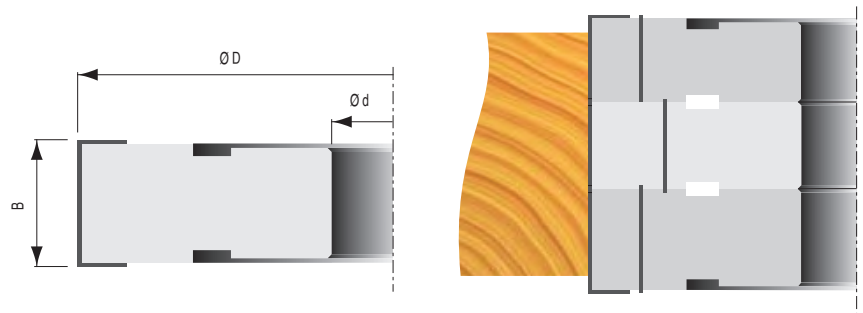


# Stackable Planing Cutterheads

## Application

- These heads fit reversible HW knives and can be assembled for use on horizontal or vertical spindles for planing operations.
- The length of cut is 30mm or 50mm.
- The assembly is simple and is achieved by interlocking the recess on the tools body.

Ø D (mm)	B (mm)	Ø d (mm)	Ø d max (mm)	Z	RPM (min-max)
125	30	40	50	4	11500
125	50	40	50	4	11500

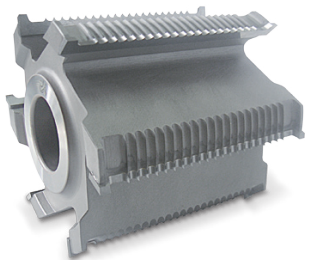
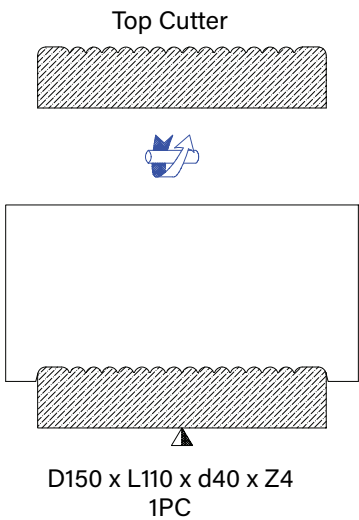


# Braised Tip

## Reeded Decking

### Application

- Reeded finish to allow airflow underneath the boards.
- Can be used on a spindle moulder or a 4-sided moulder.

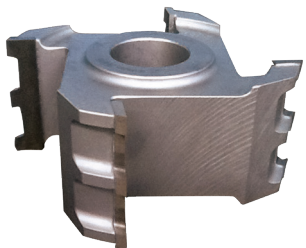
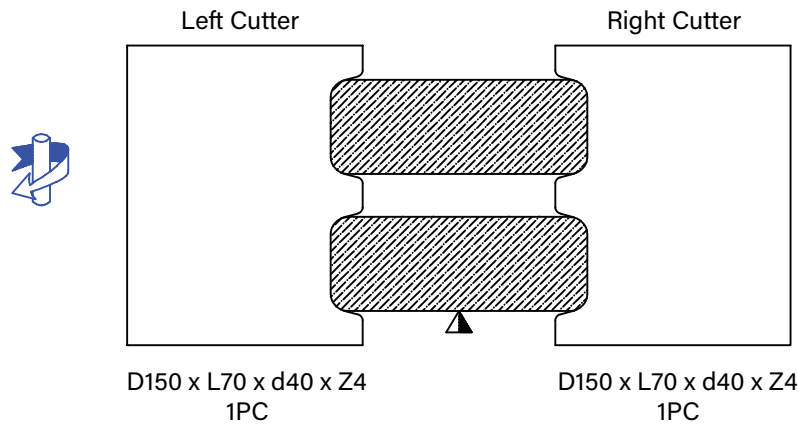


# Double Pencil Round

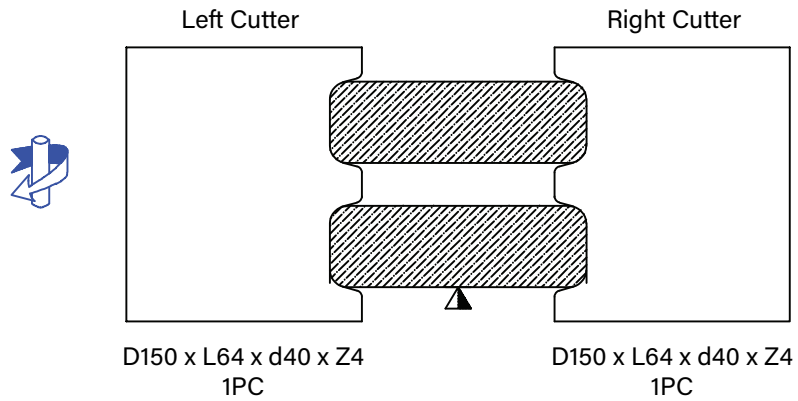
### Application

- For decking and dressing applications, available in 19mm or 22mm.
- To be used on a 4-sided moulder.

## 22mm



## 19mm





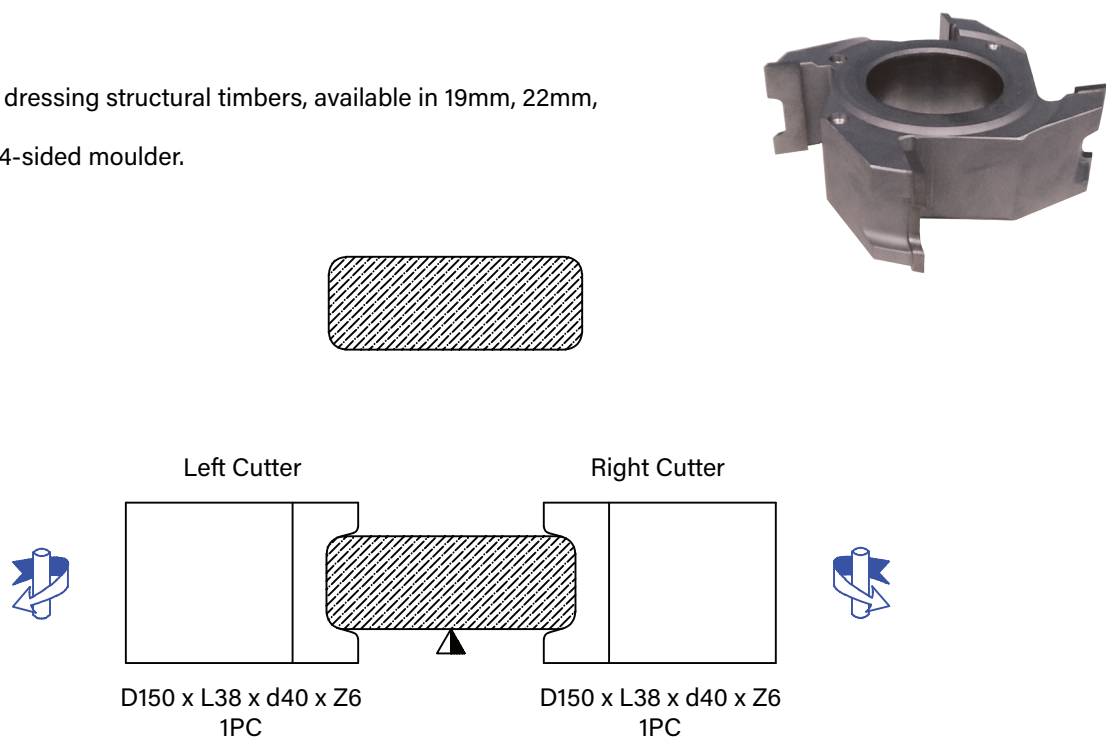
# Braised Tip

## Pencil Round

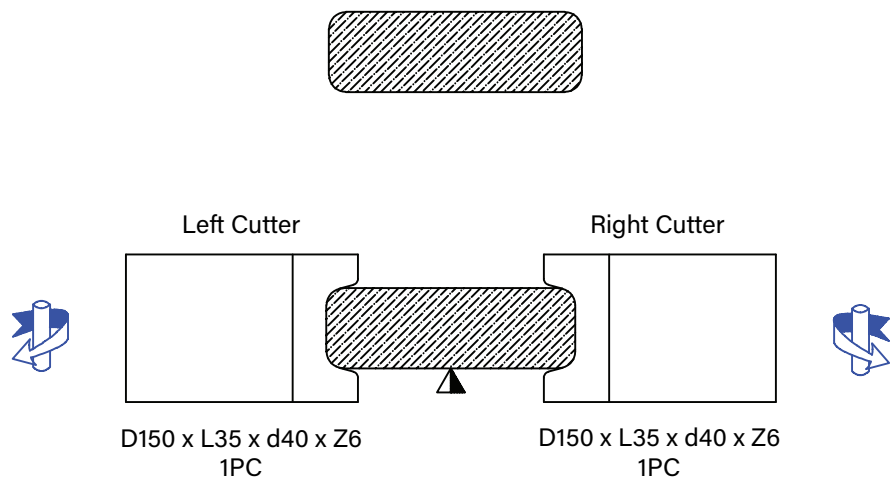
### Application

- For decking and dressing structural timbers, available in 19mm, 22mm, 35mm & 45mm.
- To be used on a 4-sided moulder.

### Cutter 22mm



### Cutter 19mm

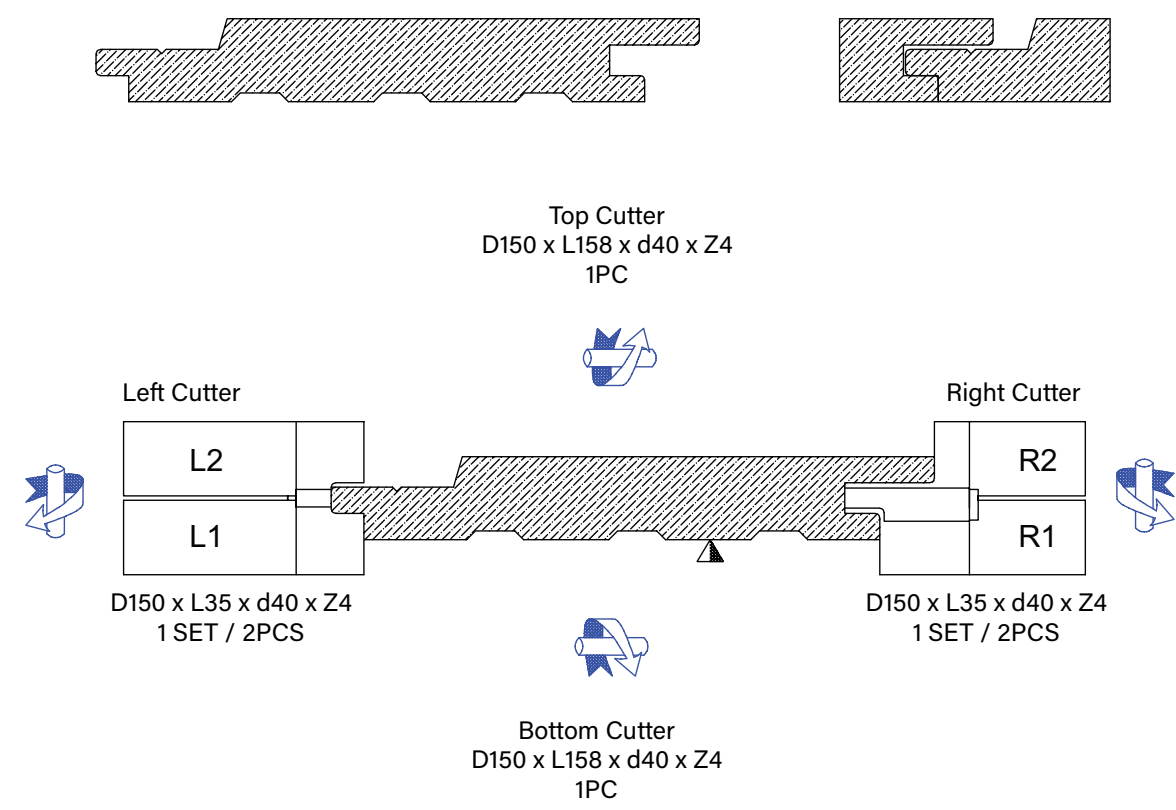


# Braised Tip

## Shiplap

### Application

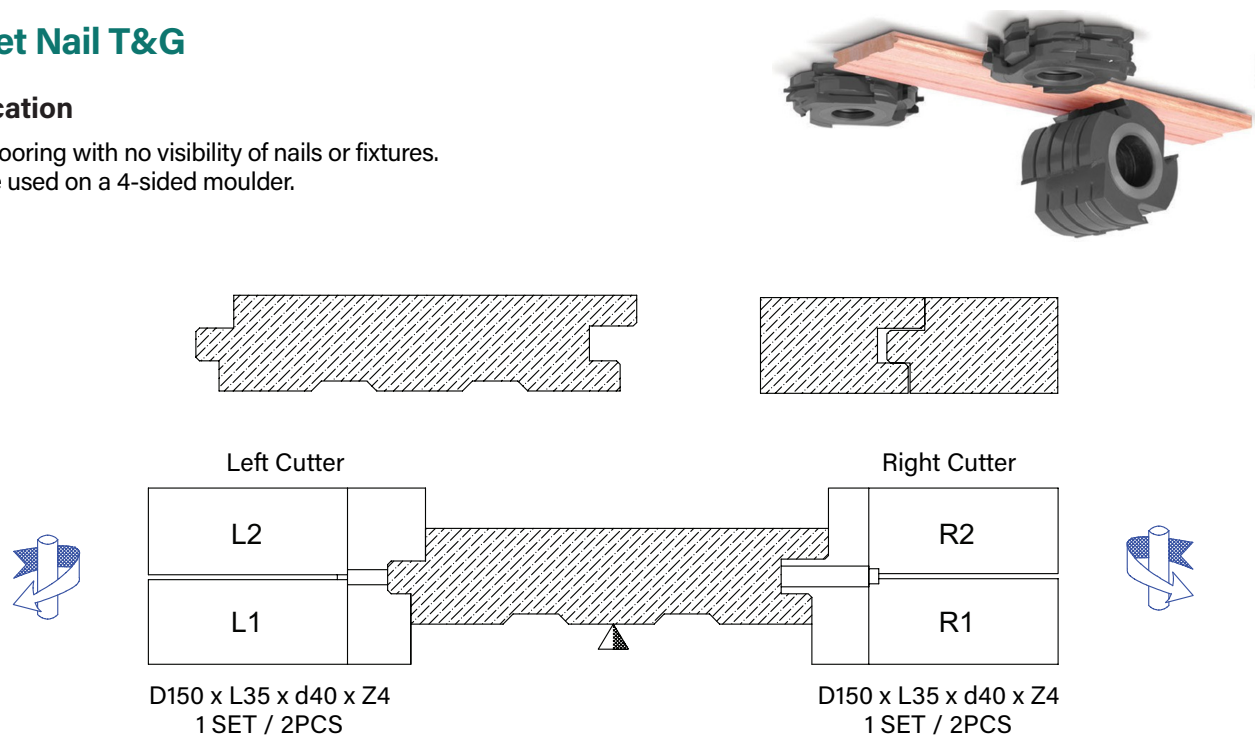
- For internal cladding or external cladding.
- To be used on a 4-sided moulder.



## Secret Nail T&G

### Application

- For flooring with no visibility of nails or fixtures.
- To be used on a 4-sided moulder.

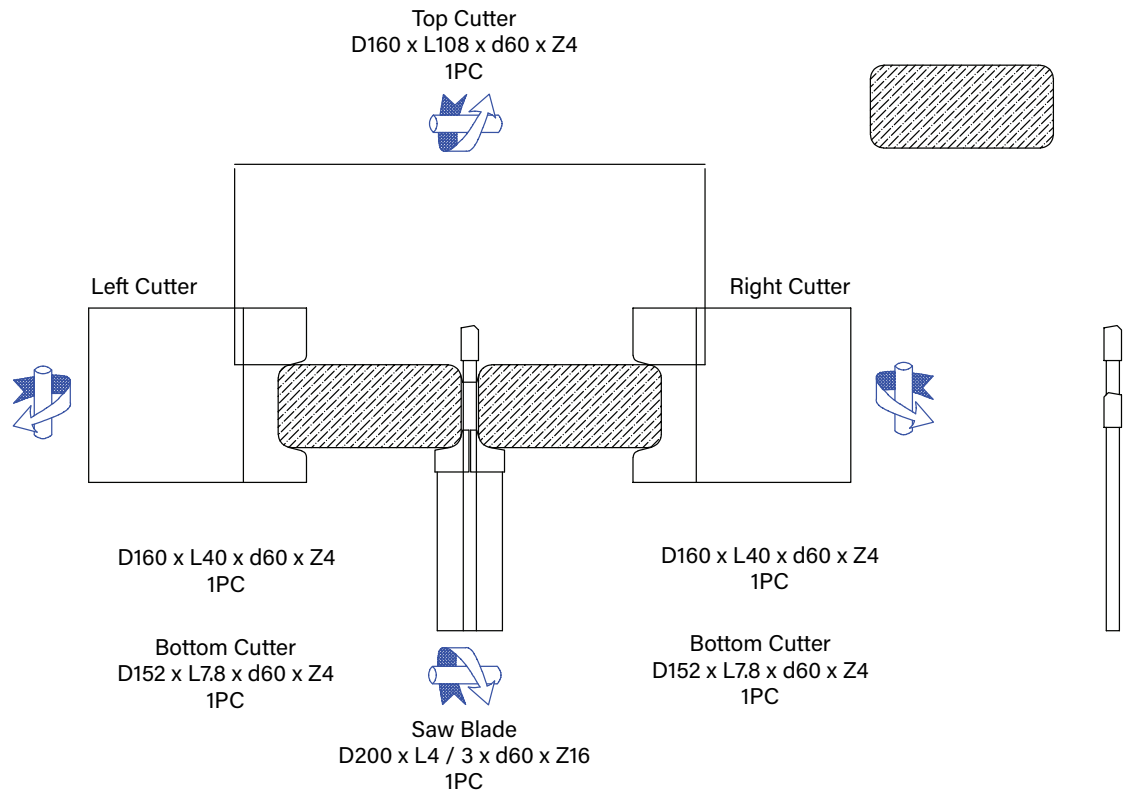


Braised Tip

Splitting

Application

- Splitting wider boards into dressed products, available in 19mm, 22mm, 35mm & 45mm.
- To be used on a 4-sided moulder.

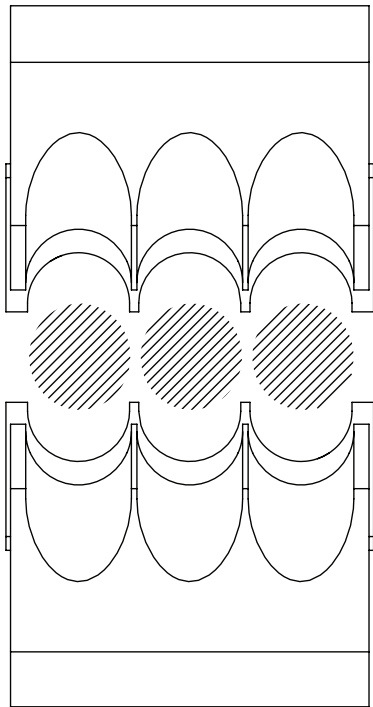


Dowel Cutterhead

For producing single or multiple dowels, available with a smooth or ribbed finish.  
Can be manufactured in most diameter ranging from 3 – 30mm.

Application

- To be used on a 4-sided moulder



Finger Joint Cutterheads

Application

- High performance modular cutter system.
- Patented knife clamping for longitudinal glue jointing (DIN 68140).
- Optional with 4 - 16 PVD-coated powder HS-knives for highly stressed structural components in engineered timber construction (DIN 1052), window tooling and laminar profiling.
- Cutters with steel body.
- Locked against rotation.
- Knife backside clamping for fast and easy knife change.
- Suitable for mechanical feed only.

Cutter excluding Knives

Ø D (mm)	B (mm)	Ø d (mm)	Ø d max (mm)	Z	RPM (min-max)
138 (160)	25.6	40	50	4	8000
226 (250)	25.6	40	60	6	5500

Cutter excluding Knives

Ø D (mm)	B (mm)	Ø d (mm)	Ø d max (mm)	Z	RPM (min-max)
138 (160)	25.2	40	50	4	8000
138 (160)	25.2	40	60	6	8000
226 (250)	25.2	40	60	6	5500

Cutter excluding Knives

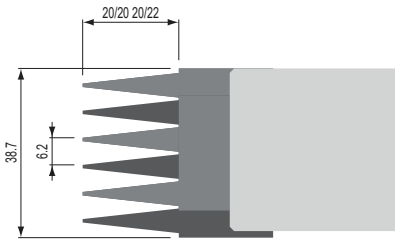
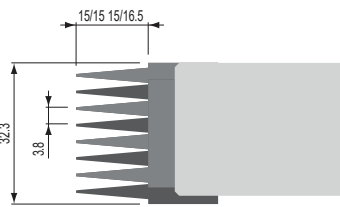
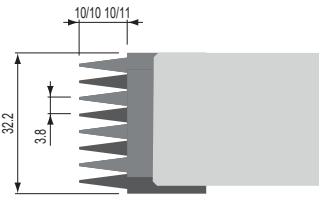
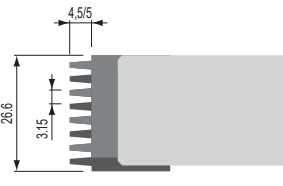
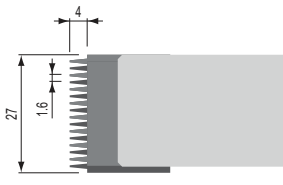
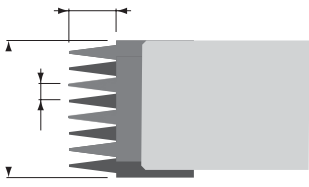
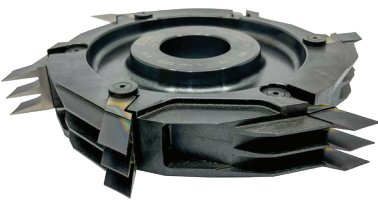
Ø D (mm)	B (mm)	Ø d (mm)	Ø d max (mm)	Z	RPM (min-max)
129 (160)	30.4	40	50	4	8500
129 (160)	30.4	40	50	6	8500
216 (250)	30.4	40	60	6	5500
216 (250)	30.4	40	60	8	5500

Cutter excluding Knives

Ø D (mm)	B (mm)	Ø d (mm)	Ø d max (mm)	Z	RPM (min-max)
149 (170)	30.4	40	50	4	8000
149 (170)	30.4	40	50	6	8000
235 (260)	30.4	40	60	6	5200
235 (260)	30.4	40	60	8	5200

Cutter excluding Knives

Ø D (mm)	B (mm)	Ø d (mm)	Ø d max (mm)	Z	RPM (min-max)
152 (180)	37.2	40	50	4	7500
232 (260)	37.2	40	60	6	5200



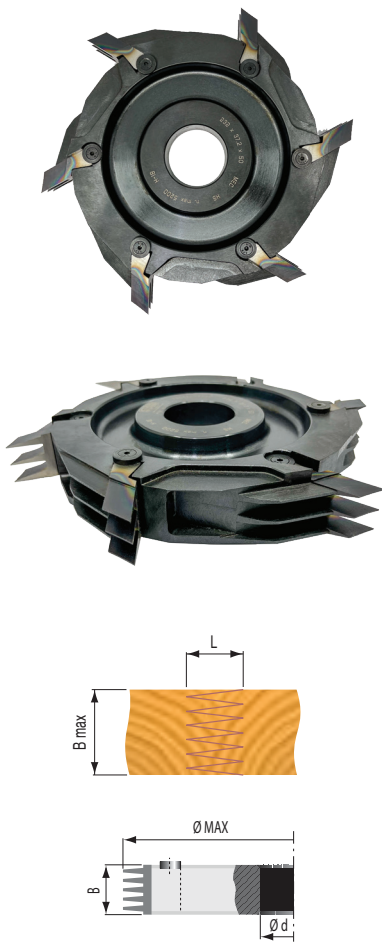


Finger Joint Cutterheads

Table for determination of wood thickness depending on width of cutterset.

L (mm)	B max (mm)	Nr.	Ø max (mm)	B (mm)
4/4 Pitch 1.6mm	25.2	1	160 (250)	27
	50.8	2	160 (250)	52.6
	76.4	3	160 (250)	78.2
	102	4	160 (250)	103.8
	127.6	5	160 (250)	129.4
	153.2	6	160 (250)	155
10/10 10/11 Pitch 3.8mm	29.8	1	160 (250)	32.2
	60.2	2	160 (250)	62.6
	90.6	3	160 (250)	93
	121	4	160 (250)	123.4
	151.4	5	160 (250)	153.8
	181.8	6	160 (250)	184.2
15/15 15/16.5 Pitch 3.8mm	212.2	7	160 (250)	214.6
	29.8	1	170 (260)	32.2
	60.2	2	170 (260)	62.6
	90.6	3	170 (260)	93
	121	4	170 (260)	123.4
	151.4	5	170 (260)	153.8
20/20 20/22 Pitch 6.2mm	181.8	6	170 (260)	184.2
	212.2	7	170 (260)	214.6
	242.6	8	170 (260)	245
	273	9	170 (260)	275.4
	303.4	10	170 (260)	305.8
	36.3	1	180 (260)	38.7
	73.5	2	180 (260)	75.9
	110.7	3	180 (260)	113.1
	147.9	4	180 (260)	150.3
	185.1	5	180 (260)	187.5
	222.3	6	180 (260)	224.7
	259.5	7	180 (260)	261.9
	296.7	8	180 (260)	299.1
	333.9	9	180 (260)	336.3

The knives with dimension 4,5/5mm, 10/11mm, 15/16,5mm and 20/22mm are usable on machines with cut-off hogging set.



Finger Joint Cutterheads

HS Knives with Special Coating 'PVD' Physical Vapor Desposition

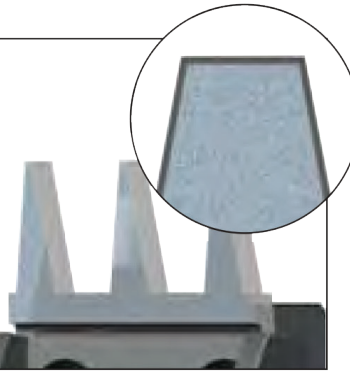
L (mm)	Pitch (mm)	Dimensions
4	1.6	25.4 x 33 x 14
4.5/5	3.15	23.4 x 33 x 14
10/10	3.8	28.4 x 38.5 x 14
10/11	3.8	28.4 x 38.5 x 14
15/15	3.8	28.4 x 43.5 x 14
15/16.5	3.8	28.4 x 43.5 x 14
20/20	6.2	32.5 x 48.5 x 14
20/22	6.2	32.5 x 48.5 x 14

HW Knives

L (mm)	Pitch (mm)	Dimensions
10/10	3.8	28.4 x 38.5 x 14
10/11	3.8	28.4 x 38.5 x 14

Outer Rabbeting Knives for Closed Joints (10/10)  
HS Knives with Special Coating 'PVD' Physical Vapor Desposition

L (mm)	Type	Dimensions
10/10	A	28.8x33.2x14
10/10	B	26.6x33.2x14

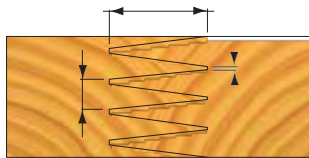


Braised Finger Joint Cutterheads

Application

- Brazed HW cutters for 10/11 junctions to be assembled onto joint bushes.
- The tools can be supplied with 4 teeth for =160 and 6 teeth for =250; thanks to their modularity they are rather functional for machining wood of any thickness both for vertical and horizontal joints and for machines with high feed rates.
- Easy positioning on bushes.
- Possibility to machine more than one panel at one time.
- Possibility to machine wood of different thicknesses.
- Possibility to achieve junctions with a continuous profile, with straight and offset side faces.
- Possibility to be re-sharpened (3.5mm max).

Ø D (mm)	B (mm)	Ø d (mm)	L (mm)	Z	RPM (min-max)
160	3.8	60	10/11	4	8300
160	11.4	60	10/11	4	8300
250	3.8	60	10/11	6	6000
250	11.4	60	10/11	6	6000
160	3.8	60	15/16.5	4	8300
160	11.4	60	15/16.5	4	8300
250	3.8	60	15/16.5	6	6000
250	11.4	60	15/16.5	6	6000



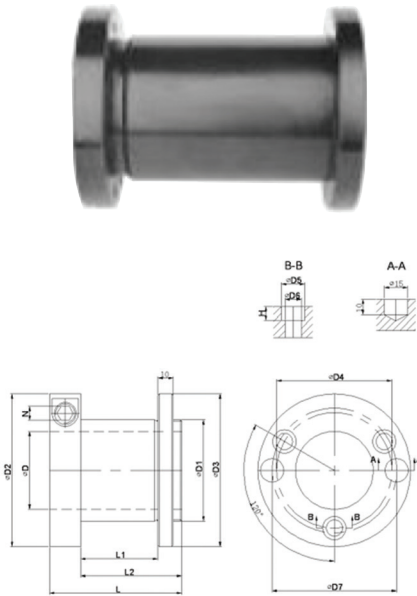
Sleeves

Non Hydro

Application

- An extremely accurate mounting system for use on those arbors that are not threaded. For use on moulders, tenon machines etc.
- A welded design.
- The sleeve O.D. is threaded and supplied with a knurled ring nut that has 3 set screws in it.
- The set screws are tightened after the nut is tightened by hand against the assembly.
- Tools can be fastened by using the bolts through the flange or using the knurled ring nut and set screws.

ØD	ØD1	L1	L
40	60	40	75
40	60	60	95
40	60	80	115
40	60	105	140
40	60	155	190
40	60	205	240



Hydro

Hydro Sleeves are used in conjunction with various types of tooling to allow for several tools to be mounted as a unit, convert straight bore tooling into hydro, and improve tool run out by more accurately cantering onto a spindle.

The hydraulic sleeves are designed for a light press fit against the tool. This means that the unit must be fastened together by screws.

When pressurized, the sleeves expand only against the spindle.

ØD	ØD1	L1	L
50	60	40	75
50	60	60	95
50	60	80	115
50	60	105	140
50	60	155	190
50	60	195	230
50	60	205	240





# High Speed Cutterheads

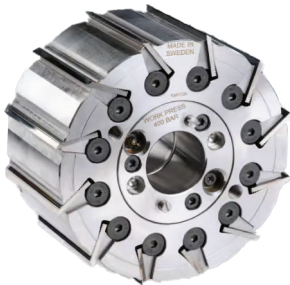
## Hydro Planing Cutterheads

We can provide cutterheads in dimensions up to  $\varnothing 425$  mm and cutting lengths up to 420 mm. The cutterheads can be produced in either steel or aluminium.



## Raptor Serrated Cutterheads

Our unique solution for cutters where the back serrated knives are fastened with only two screws per knife (one screw at each end of the cutter). The Raptor cutterheads can be produced in either steel or aluminium.



## Castor Cutterheads

Because of the unique cutting geometry, it reduces cutting friction and provides longer running times. The cutterheads can be produced in customized dimensions.



## LV Side Cutterheads

LV knives are face ground and don't require to be profile ground, an extremely efficient solution for high quantity knife applications.

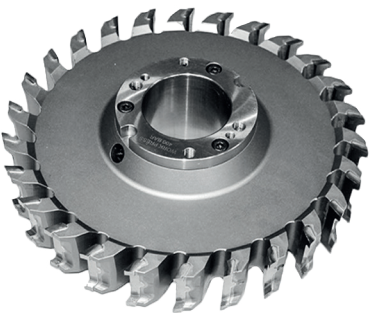


## Braised Tipped Cutterheads

Available in HSS or Carbide Tipped and can be designed to suit your application.

### HS Convex

The Convex cutter with its unique design retains the same clearance angle throughout its entire service life. The profile and diameter changes will be minimal. The Convex cutter comes with high-speed steel. Thanks to the specially designed edge, the Convex cutter has a stronger more impact-resistant edge, which gives longer runs compared to a standard cutter.



### HS Standard

Concaved shaped cutters fitted with high-speed steel. Can be adapted with angles for all materials on the market. Primarily intended for shorter runs.

### HW Carbide

Concaved shaped cutter with carbide tip provide long running time. This is achieved thanks to high abrasion resistance. The carbide properties make it particularly suitable for, for example, double radius cutters where long running times are desired.

# High Speed Cutterheads

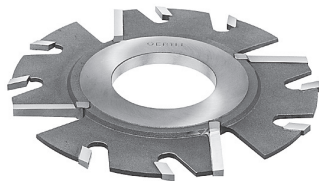
## Splitting Cutterset

Available in HSS or Carbide Tipped and can be designed to suit your application. For feed speeds 150m/min+



## Oertli Splitting Cutter

In a single pass, the workpiece is not only split, but also (as required) simultaneously rounded or bevelled on the edges. Laterally arranged planing teeth produce perfectly smooth surfaces.

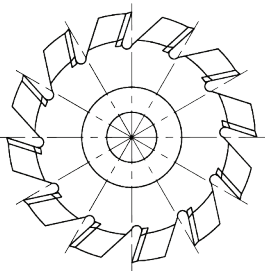


### Materials

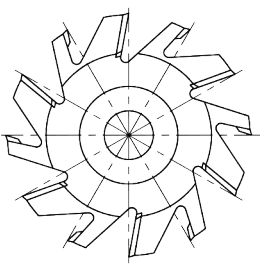


Softwood

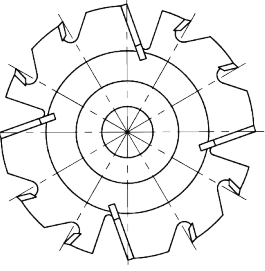
$\varnothing D$ (mm)	B/b (mm)	HD	$\varnothing d$ (mm)	Z
180	4.0	25	59.96	12 (4+8)
180	4.5	32	59.96	12 (4+8)
200	4.5	32	59.96	12 (4+8)
215	5.5	40	59.96	12 (4+8)
230	7.0	50	59.96	12 (4+8)
225	7.0	50	60.00	12 (6+6)



With planing teeth



With planing teeth positive /  
Raker teeth positive



With planing teeth negative /  
Raker teeth positive

