

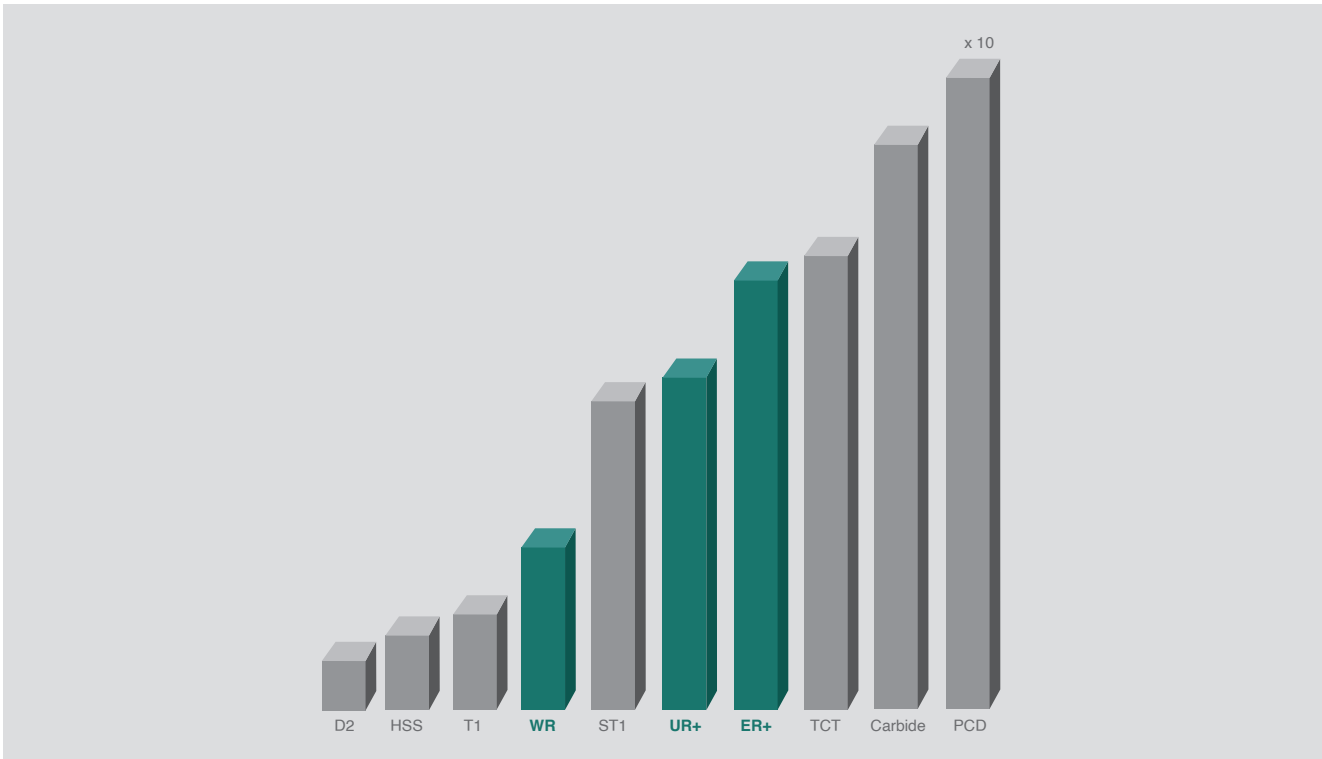


Knives Steel



Knife Steel Variations	7
Knife Steel Applications	8
D2 Serrated Knife	9
HSS Serrated Knife	10
T1 Serrated Knife	11
WR Serrated Knife	12
ST1 Serrated Knife	13
ER+ Serrated Knife	14
TCT Serrated Knife	15
Superlock	16
D2 Planing Knife	17
HSS Planing Knife	17
T1 Planing Knife	18
WR Planing Knife (Coated)	19
ST1 Planing Knife	19
ER+ Planing Knife	20
TCT Planing Knife	20
Solid Carbide	21
Rougherhead Serrated - HSS	22
Rougherhead Planing - WR	23
Rougherhead Serrated - WR	24
LV Knife	25
Grind to Profile Service	26

Knife Steel Variations



D2 - High Carbon High Chrome

Well-known product that has performed extremely well in high-speed applications. It is easy to grind, and its properties resists chips in knotty wood applications. D2 contains 12% chromium to resist chemical erosion. Offers great value for shorter run mouldings or high-speed applications.

HSS - V2

The newest breed of HSS with extra Vanadium for long life. This steel performs extremely well on higher RPM machines such as Weinig Powermat. V2 has a 63 HRC rating and is easy to grind and profile.

HSS - T1

European grade steel that has been well proven over time. Application in both Hardwood and Softwood production runs. Now being replaced by Coated Steels as the preferred knife steel for modern machines.

WR - Coated Steel

Coated Steel is now the preferred knife steel for moulding producers and mills that want the ultimate in knife and cutting performance. WR is the most widely supplied Coated Knife. The hard long wearing coating to the face considerably extends the cutting performance.

ST1 - Kanefusa

ST1 Provides up to 5 times longer edge life compared with regular HSS knives. Longer lifetime increases machine run time and reduces grinding cost. Due to its self-reshaping properties, consistent high surface quality is achieved, reducing, or even eliminating subsequent sanding. Provides high process reliability.

ER+

Using new technology on a different base steel UR+ has incorporated a superior surface coating than WR and SR+. Ideally suited for long run applications and/or when a high-quality surface finish is required. Ideally suited for Softwood applications or timbers which contain tannic acids.

TCT Inlay - Carbide

TCT inlay has proven itself over the past four decades. This inlay has been developed to best suit our eucalypt and ash Hardwoods. It is also able to be jointed and available in all sizes. Can be run at 12,000rpm.

Solid Carbide

Solid Carbide has developed over the past decade. The grade is specific to our market conditions and delivers a very good, finished product while standing up to the most extreme Hardwoods. Exceptional finish is also shown on MDF. Can be solid steel and the ever-popular Double Back system for profiling.

PCD

Polycrystalline Diamond is extremely durable and maintains a sharper cutting edge much longer than conventional cutting edges when cutting abrasive materials. They also have an exceptional service life while maintaining high precision. They can be used to cut these materials at higher speeds, increasing material removal rates. Ideally suited for long runs in hardwoods, MDF and Fibre Cement.

Knife Steel Applications

	KNIFE STEEL										BENEFITS	
SPECIES	D2	HSS	T1	WR	ER+	ST1	TCT	Solid Carbide	Double Back	PCD	Extra Life	Better Finish
SOFTWOODS												
Cedar			✓	✓		✓					✓	✓
Cypress		✓	✓				✓				✓	
Douglas Fir			✓	✓		✓					✓	
Pine	✓	✓	✓	✓							✓	
HARDWOODS			✓									
Ash			✓	✓	✓	✓	✓			✓		✓
Blackbutt			✓	✓	✓		✓	✓	✓	✓	✓	✓
Iron Bark			✓		✓		✓	✓	✓	✓	✓	
Jarrah			✓	✓	✓	✓	✓	✓	✓	✓	✓	
Merbau/Kwila			✓		✓	✓	✓				✓	
Oak			✓	✓	✓	✓	✓				✓	
Spotted Gum			✓		✓	✓	✓	✓	✓	✓	✓	✓
MDF				✓		✓	✓		✓	✓	✓	✓
PRIMED TIMBER				✓			✓		✓		✓	

✓ = Recommended

* This recommendation table is only general in nature and is to be used as a rough guide only. Most recommendations are based on production runs between 500 - 1500 lineal meters, which are subject to moisture content, condition of timber and grinding equipment.

Our Knife Steel Balance Pair

To uphold your company's reputation in crafting high-quality profiles, we ensure every knife is meticulously balanced. Balancing the weight of knives before and after profile grinding is essential as this guarantees the precise balance necessary for the maximum performance of modern moulding machines, which operate at spindle speeds ranging from 6000 to 12000 RPM. Accurate ensures each pair of knives is balanced within a 0.1-gram margin of each other, this means the spindle bearings perform optimally and deliver superior product finish quality.

D2 Serrated Knife

Application

- For Softwood and Hardwood, profiling, and planing.
- True high grade A.I.S.I. mill run steels.
- Heat-treated with triple tempers for greater consistency.
- Resists chips in knotty Softwoods.
- Easy to grind.
- Precision ground with CNC grinding machines.
- A full line of the thickness and widths at the length of up to 650mm.
- Standard 16-60° serrations and 16-90° serrations as an option.

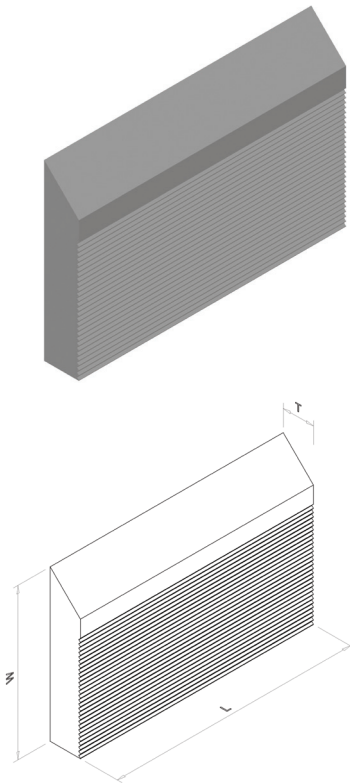
50 x 8mm

Length	Width	Thickness
60	50	8
100	50	8
130	50	8
150	50	8
180	50	8
230	50	8
240	50	8
270	50	8
310	50	8
650	50	8

60 x 8mm

Length	Width	Thickness
60	60	8
100	60	8
130	60	8
150	60	8
180	60	8
230	60	8
240	60	8
270	60	8
310	60	8
650	60	8

Other sizes available upon request.



HSS Serrated Knife

Application

- For Softwood and Hardwood, profiling, and planing.
- Offers nearly same wear life and performance as M2.
- Has a 63 HRC.
- Easy to profile shape.
- Great for most long runs in soft or Hardwoods.
- Perfect for Jointing.
- True high grade A.I.S.I. mill run steels.
- Heat-treated with triple tempers for greater consistency.
- Precision ground with CNC grinding machines.

40 x 4mm

Length	Width	Thickness
60	40	4
100	40	4
130	40	4
150	40	4
180	40	4
230	40	4
240	40	4
270	40	4
310	40	4
650	40	4

40 x 8mm

Length	Width	Thickness
60	40	8
100	40	8
130	40	8
150	40	8
180	40	8
230	40	8
240	40	8
270	40	8
310	40	8
650	40	8

50 x 8mm

Length	Width	Thickness
60	50	8
100	50	8
130	50	8
150	50	8
180	50	8
230	50	8
240	50	8
270	50	8
310	50	8
650	50	8

60 x 8mm

Length	Width	Thickness
60	60	8
100	60	8
130	60	8
150	60	8
180	60	8
230	60	8
240	60	8
270	60	8
310	60	8
650	60	8

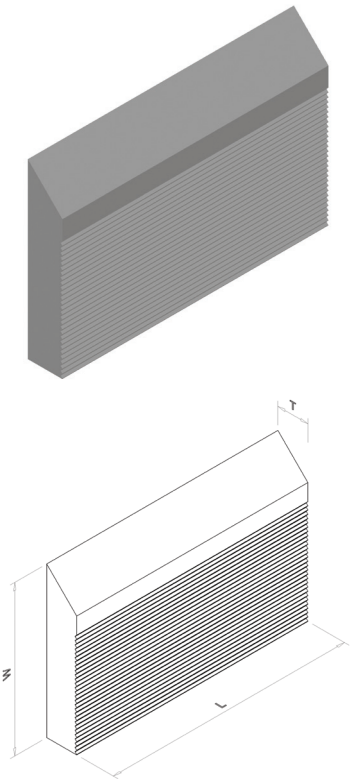
70 x 8mm

Length	Width	Thickness
60	70	8
100	70	8
130	70	8
150	70	8
180	70	8

70 x 8mm (cont.)

Length	Width	Thickness
230	70	8
240	70	8
270	70	8
310	70	8
650	70	8

Other sizes available upon request.



T1 Serrated Knife

Application

- Specially formulated grade of T1 gives excellent temper resistance.
- Recommended for all timber species.
- All cut to length supplied in balanced pairs.
- Perfect for JIT applications in Softwood and Hardwood.
- Increased amounts of Tungsten and Molybdenum increases the hardness over the entire knife body - to achieve greater life and heat resistance.

40 x 4mm

Length	Width	Thickness
60	40	4
100	40	4
130	40	4
150	40	4
180	40	4
230	40	4
240	40	4
270	40	4
310	40	4
650	40	4

40 x 6mm

Length	Width	Thickness
60	40	6
100	40	6
130	40	6
150	40	6
180	40	6
230	40	6
240	40	6
270	40	6
310	40	6
650	40	6

50 x 6mm

Length	Width	Thickness
60	50	6
100	50	6
130	50	6
150	50	6
180	50	6
230	50	6
240	50	6
270	50	6
310	50	6
650	50	6

50 x 8mm

Length	Width	Thickness
60	50	8
100	50	8
130	50	8
150	50	8
180	50	8
230	50	8
240	50	8
270	50	8
310	50	8
650	50	8

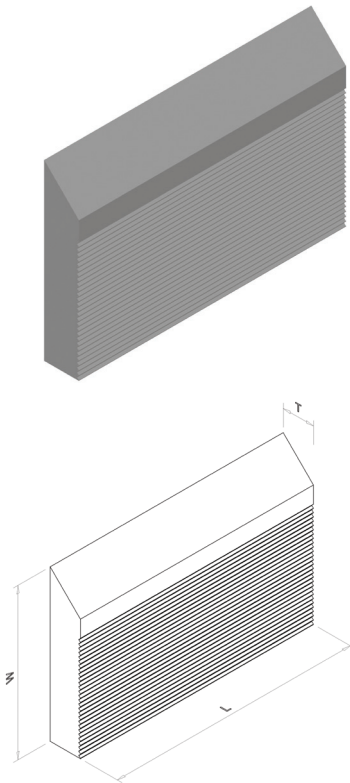
60 x 8mm

Length	Width	Thickness
60	60	8
100	60	8
130	60	8
150	60	8
180	60	8
230	60	8
240	60	8
270	60	8
310	60	8
650	60	8

70 x 8mm

Length	Width	Thickness
60	70	8
100	70	8
130	70	8
150	70	8
180	70	8
230	70	8
240	70	8
270	70	8
310	70	8
650	70	8

Other sizes available upon request.



WR Serrated Knife

Application

- For Softwood and Hardwood, profiling, and planing.
- Great for most Hardwoods.
- Can triple tool life in wet woods that contain tannic acids (oak, cedar, redwood).
- For cutting problem Hardwoods and super long production runs.
- Precision ground with CNC grinding machines.
- A full line of the thickness and widths at the length of up to 650mm.
- Standard 16-60° serrations and 16-90° serrations as an option.

40 x 5mm

Length	Width	Thickness
60	40	5
100	40	5
130	40	5
150	40	5
180	40	5
230	40	5
240	40	5
270	40	5
310	40	5
650	40	5

40 x 8mm

Length	Width	Thickness
60	40	8
100	40	8
130	40	8
150	40	8
180	40	8
230	40	8
240	40	8
270	40	8
310	40	8
650	40	8

50 x 6mm

Length	Width	Thickness
60	50	6
100	50	6
130	50	6
150	50	6
180	50	6
230	50	6
240	50	6
270	50	6
310	50	6
650	50	6

50 x 8mm

Length	Width	Thickness
60	50	8
100	50	8
130	50	8
150	50	8
180	50	8
230	50	8
240	50	8
270	50	8
310	50	8
650	50	8

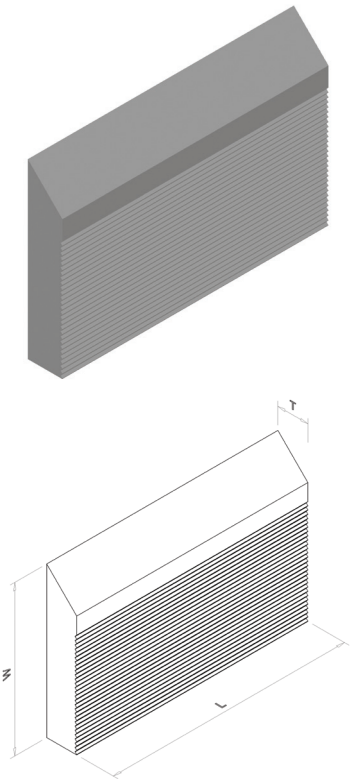
60 x 8mm

Length	Width	Thickness
60	60	8
100	60	8
130	60	8
150	60	8
180	60	8
230	60	8
240	60	8
270	60	8
310	60	8
650	60	8

70 x 8mm

Length	Width	Thickness
60	70	8
100	70	8
130	70	8
150	70	8
180	70	8
230	70	8
240	70	8
270	70	8
310	70	8
650	70	8

Other sizes available upon request.



ST1 Serrated Knife

Application

- Provides up to 5 times longer edge life when compared with regular HSS Knives.
- Reduces grinding costs.
- Self-resharpening properties.
- High surface quality.
- Reduces subsequent sanding.
- High process reliability.

40 x 5mm

Length	Width	Thickness
60	40	5
100	40	5
130	40	5
150	40	5
180	40	5
230	40	5
240	40	5
270	40	5
310	40	5
635	40	5

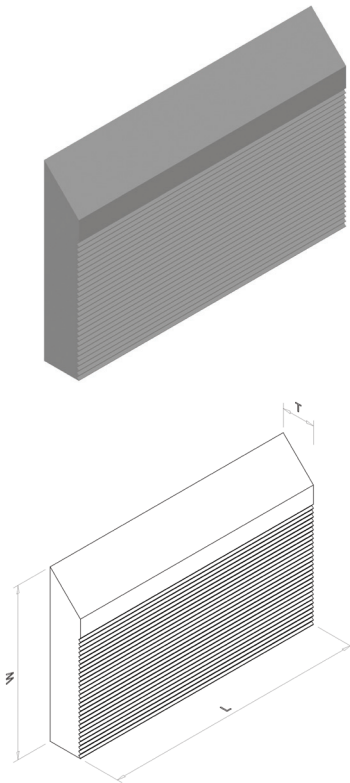
50 x 8mm

Length	Width	Thickness
60	50	8
100	50	8
130	50	8
150	50	8
180	50	8
230	50	8
240	50	8
270	50	8
310	50	8
635	50	8

60 x 8mm

Length	Width	Thickness
60	60	8
100	60	8
130	60	8
150	60	8
180	60	8
230	60	8
240	60	8
270	60	8
310	60	8
635	60	8

Other sizes available upon request.



ER+ Serrated Knife

Application

- For Softwood and Hardwood, profiling, and planing.
- Great for most Hardwoods.
- Can triple tool life in wet woods that contain tannic acids (oak, cedar, redwood).
- For cutting problem Hardwoods and super long production runs.
- Precision ground with CNC grinding machines.
- A full line of the thickness and widths at the length of up to 650mm.
- Standard 16-60° serrations and 16-90° serrations as an option.

50 x 8mm

Length	Width	Thickness
60	50	8
100	50	8
130	50	8
150	50	8
180	50	8
230	50	8
240	50	8
270	50	8
310	50	8
650	50	8

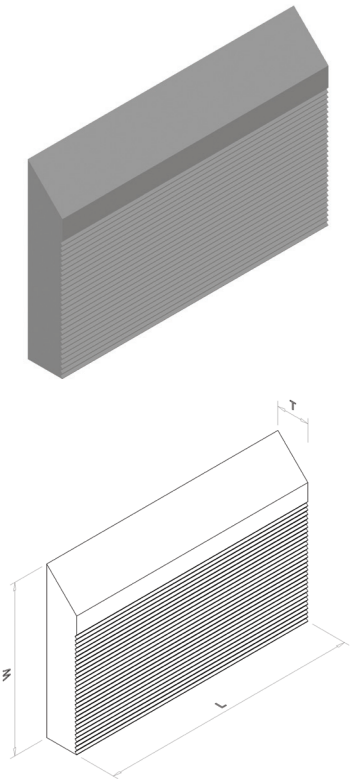
60 x 8mm

Length	Width	Thickness
60	60	8
100	60	8
130	60	8
150	60	8
180	60	8
230	60	8
240	60	8
270	60	8
310	60	8
650	60	8

70 x 8mm

Length	Width	Thickness
60	70	8
100	70	8
130	70	8
150	70	8
180	70	8
230	70	8
240	70	8
270	70	8
310	70	8
650	70	8

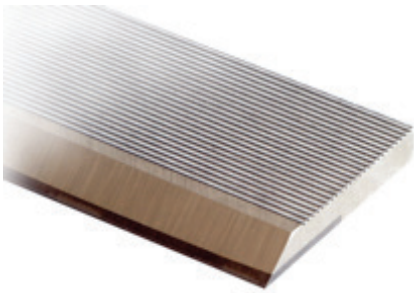
Other sizes available upon request.



TCT Serrated Knife

Application

- Recommended for Hardwood and Manufactured Boards as well as Face & Edge glue products.
- Extreme hardness minimizes wear of knife steel.
- Designed and manufactured to exacting standards for precision and quality.
- Tungsten inlay manufactured from Tungsten Metal Powder because of its hardness and wear resistance characteristics.
- Requires Diamond Wheel for grinding.
- Jointing using Silicone Jointing Stones.

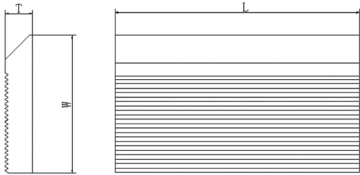


40 x 8mm

Length	Width	Thickness
60	40	8
100	40	8
130	40	8
150	40	8
180	40	8
230	40	8
240	40	8
270	40	8
310	40	8
650	40	8

50 x 8mm

Length	Width	Thickness
60	50	8
100	50	8
130	50	8
150	50	8
180	50	8
230	50	8
240	50	8
270	50	8
310	50	8
650	50	8



60 x 8mm

Length	Width	Thickness
60	60	8
100	60	8
130	60	8
150	60	8
180	60	8
230	60	8
240	60	8
270	60	8
310	60	8
650	60	8

50 x 10mm

Length	Width	Thickness
60	50	10
100	50	10
130	50	10
150	50	10
180	50	10
230	50	10
240	50	10
270	50	10
310	50	10
650	50	10

60 x 10mm

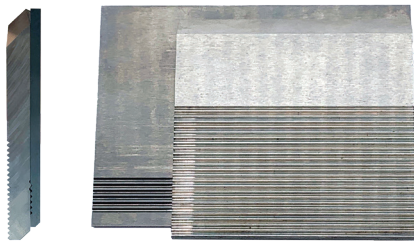
Length	Width	Thickness
60	60	10
100	60	10
130	60	10
150	60	10
180	60	10
230	60	10
240	60	10
270	60	10
310	60	10
650	60	10

Other sizes available upon request.

Superlock

Application

- Recommended for Hardwood and Manufactured Boards as well as Face & Edge glue products.
- Extreme hardness minimizes wear of knife steel.
- Designed and manufactured to exacting standards for precision and quality.
- Can be used as a cost-effective alternative to Diamond.
- Improved developments during manufacturing process has drastically reduced the brittleness of Tungsten Carbide.
- Requires Diamond Wheel for grinding.
- Jointing using Silicone Carbide or Diamond Jointing Stones.



40 x 10mm

Length	Width	Backing Plate	Knife
60	40	7	3
100	40	7	3
130	40	7	3
150	40	7	3
180	40	7	3
230	40	7	3
240	40	7	3
270	40	7	3
300	40	7	3

50 x 10mm

Length	Width	Backing Plate	Knife
60	50	7	3
100	50	7	3
130	50	7	3
150	50	7	3
180	50	7	3
230	50	7	3
240	50	7	3
270	50	7	3
300	50	7	3

60 x 10mm

Length	Width	Backing Plate	Knife
60	60	7	3
100	60	7	3
130	60	7	3
150	60	7	3
180	60	7	3
230	60	7	3
240	60	7	3
270	60	7	3
300	60	7	3

70 x 10mm

Length	Width	Backing Plate	Knife
60	70	7	3
100	70	7	3
130	70	7	3
150	70	7	3
180	70	7	3
230	70	7	3
240	70	7	3
270	70	7	3
300	70	7	3

Other sizes available upon request.

D2 Planning Knife

Application

- For Softwood and Hardwood, profiling, and planing.
- True high grade A.I.S.I. mill run steels.
- Heat-treated with triple tempers for greater consistency.
- Resists chips in knotty Softwoods.
- Easy to grind.
- Precision ground with CNC grinding machines.

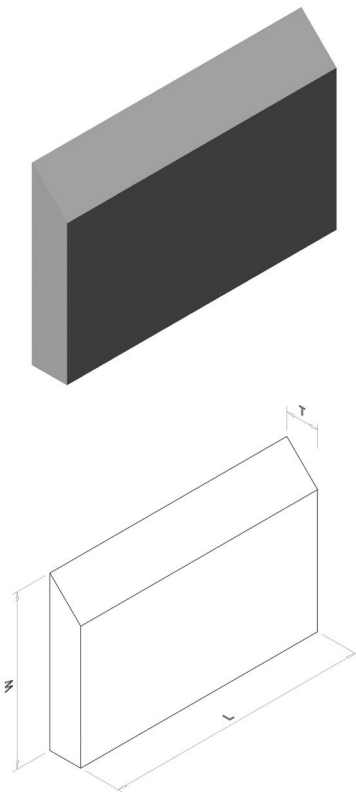
30 x 3mm

Length	Width	Thickness
100	30	3
130	30	3
150	30	3
180	30	3
230	30	3
310	30	3
1050	30	3

35 x 3mm

Length	Width	Thickness
100	35	3
130	35	3
150	35	3
180	35	3
230	35	3
310	35	3
1050	35	3

Other sizes available upon request.



HSS Planning Knife

Application

- For Softwood and Hardwood, profiling, and planing.
- Offers nearly same wear life and performance as M2.
- Has a 63 HRC.
- Easy to profile shape.
- Great for most long runs in soft or Hardwoods.
- Perfect for Jointing.
- True high grade A.I.S.I. mill run steels.
- Heat-treated with triple tempers for greater consistency.
- Precision ground with CNC grinding machines.

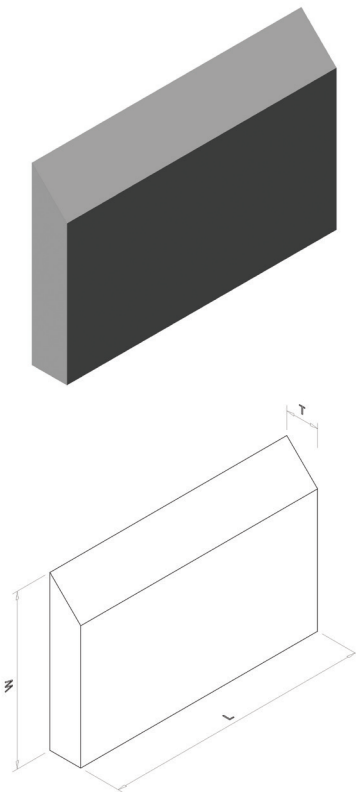
30 x 3mm

Length	Width	Thickness
100	30	3
130	30	3
150	30	3
180	30	3
230	30	3
310	30	3
1050	30	3

35 x 3mm

Length	Width	Thickness
100	35	3
130	35	3
150	35	3
180	35	3
230	35	3
310	35	3
1050	35	3

Other sizes available upon request.



T1 Planing Knife

Application

- Specially formulated grade of T1 gives excellent temper resistance.
- Recommended for all timber species.
- All cut to length supplied in balanced pairs.
- Perfect for JIT applications in Softwood and Hardwood.
- Increased amounts of Tungsten and Molybdenum increases the hardness over the entire knife body - to achieve greater life and heat resistance.

30 x 3mm

Length	Width	Thickness
60	30	3
100	30	3
130	30	3
150	30	3
180	30	3
230	30	3
310	30	3
1050	30	3

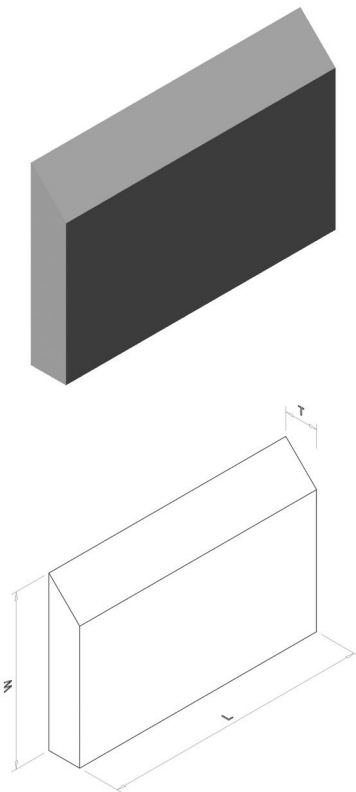
32 x 3mm

Length	Width	Thickness
60	32	3
100	32	3
130	32	3
150	32	3
180	32	3
230	32	3
310	32	3
1050	32	3

35 x 3mm

Length	Width	Thickness
60	35	3
100	35	3
130	35	3
150	35	3
180	35	3
230	35	3
310	35	3
1050	35	3

Other sizes available upon request.



WR Planing Knife (Coated)

Application

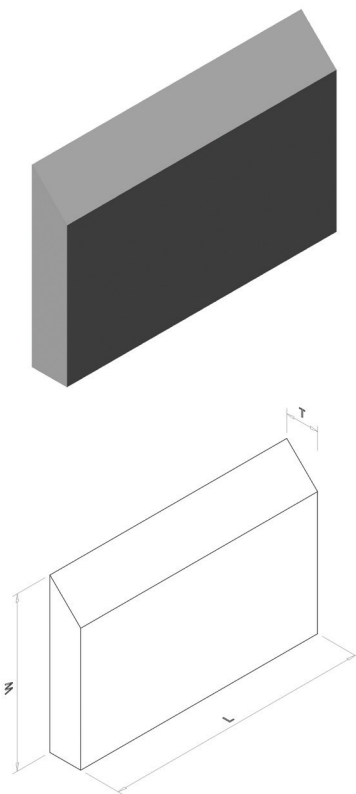
- For Softwood and Hardwood, profiling, and planing.
- Great for most Hardwoods.
- Can triple tool life in wet woods that contain tannic acids (oak, cedar, redwood).
- For cutting problem Hardwoods and super long production runs.
- Precision ground with CNC grinding machines.
- A full line of the thickness and widths at the length of up to 650mm.
- Standard 16-60° serrations and 16-90° serrations as an option.

30 x 3mm

Length	Width	Thickness
100	30	3
130	30	3
150	30	3
180	30	3
230	30	3
310	30	3
650	30	3

35 x 3mm

Length	Width	Thickness
100	35	3
130	35	3
150	35	3
180	35	3
230	35	3
310	35	3
650	35	3



ER+ Planing Knife

Application

- For Softwood and Hardwood, profiling, and planing.
- For cutting problem Hardwoods and super long production runs.
- Precision ground with CNC grinding machines.
- Provide the ultimate value and long tool life.

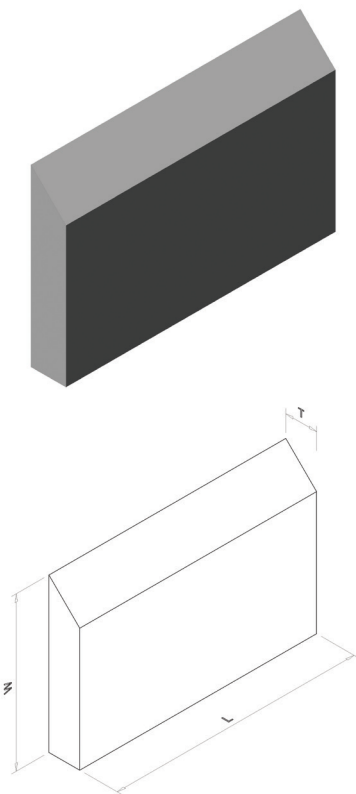
30 x 3mm

Length	Width	Thickness
100	30	3
130	30	3
150	30	3
180	30	3
230	30	3
310	30	3
650	30	3

35 x 3mm

Length	Width	Thickness
100	35	3
130	35	3
150	35	3
180	35	3
230	35	3
310	35	3
650	35	3

Other sizes available upon request.



ST1 Planing Knife

Application

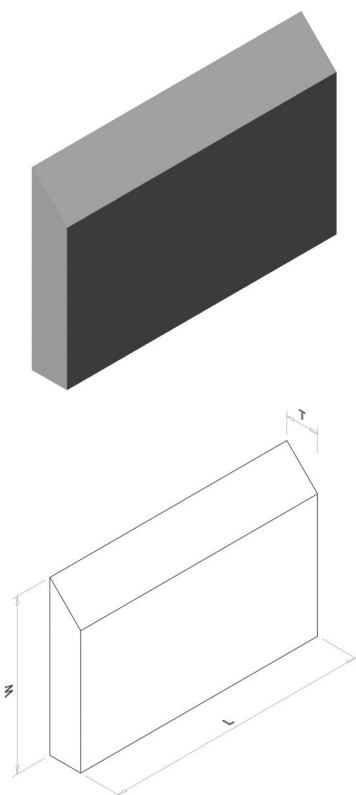
- Provides up to 5 times longer edge life when compared with regular HSS Knives.
- Reduces grinding costs.
- Self-resharpening properties.
- High surface quality.
- Reduces subsequent sanding.
- High process reliability.

30 x 3mm

Length	Width	Thickness
60	30	3
100	30	3
130	30	3
150	30	3
180	30	3
230	30	3
310	30	3
635	30	3

35 x 3mm

Length	Width	Thickness
60	35	3
100	35	3
130	35	3
150	35	3
180	35	3
230	35	3
310	35	3
635	35	3



Other sizes available upon request.

TCT Planing Knife

Application

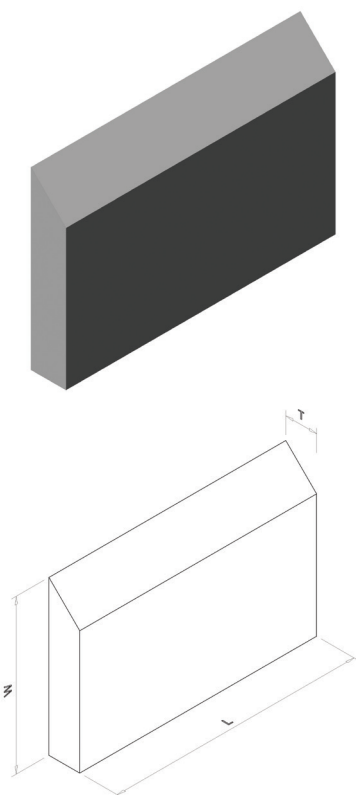
- Recommended for Hardwood and Manufactured Boards as well as Face & Edge glue products.
- Extreme hardness minimizes wear of knife steel.
- Designed and manufactured to exacting standards for precision and quality.
- Tungsten inlay manufactured from Tungsten Metal Powder because of its hardness and wear resistance characteristics.
- Requires Diamond Wheel for grinding.
- Jointing using Silicone Jointing Stones.

30 x 3mm

Length	Width	Thickness
60	30	3
100	30	3
130	30	3
150	30	3
180	30	3
230	30	3
240	30	3
270	30	3
310	30	3
1020	30	3

35 x 3mm

Length	Width	Thickness
60	35	3
100	35	3
130	35	3
150	35	3
180	35	3
230	35	3
240	35	3
270	35	3
310	35	3
1020	35	3



Solid Carbide

Application

- Recommended for Hardwood and Manufactured Boards as well as Face & Edge glue products.
- Extreme hardness minimizes wear of knife steel.
- Designed and manufactured to exacting standards for precision and quality.
- Can be used as a cost-effective alternative to Diamond.
- Improved developments during manufacturing process has drastically reduced the brittleness of Tungsten Carbide.
- Requires Diamond Wheel for grinding.
- Jointing using Silicone Carbide or Diamond Jointing Stones.

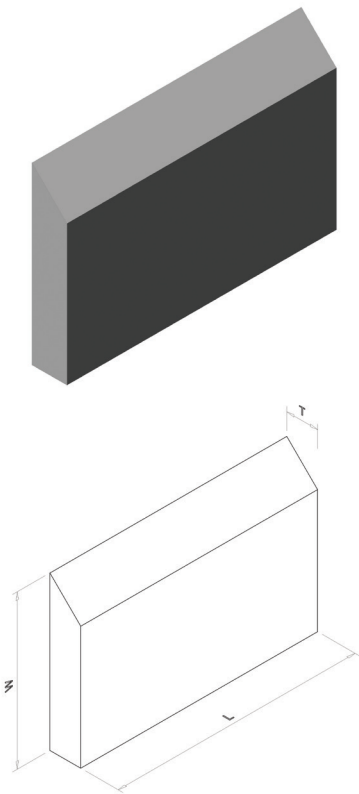
30 x 3mm

Length	Width	Thickness
100	30	3
150	30	3
220	30	3
230	30	3
240	30	3
310	30	3

30 x 4mm

Length	Width	Thickness
100	30	4
150	30	4
220	30	4
230	30	4
240	30	4
310	30	4

Other sizes available upon request.



Rougherhead Serrated - HSS

Application

- Suitable for Softwoods and Hardwoods.
- Cut to length in balanced pairs.

40 x 5mm

Length	Width	Thickness
100	40	5
130	40	5
150	40	5
180	40	5
230	40	5
330	40	5

40 x 8mm

Length	Width	Thickness
100	40	8
130	40	8
150	40	8
180	40	8
230	40	8
330	40	8

50 x 4mm

Length	Width	Thickness
100	50	4
130	50	4
150	50	4
180	50	4
230	50	4
330	50	4

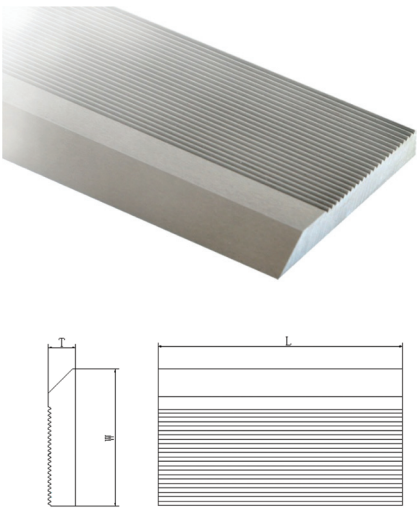
50 x 5mm

Length	Width	Thickness
100	50	5
130	50	5
150	50	5
180	50	5
230	50	5
330	50	5

50 x 6mm

Length	Width	Thickness
100	50	6
130	50	6
150	50	6
180	50	6
230	50	6
330	50	6

Made to order. Other sizes available upon request.



Rougherhead Serrated - HSS

Application

- Profile knife.
- Suitable for Softwoods and Hardwoods.
- Cut to length in balanced pairs.

40 x 6mm

Length	Width	Thickness
55	40	6
65	40	6
90	40	6
110	40	6

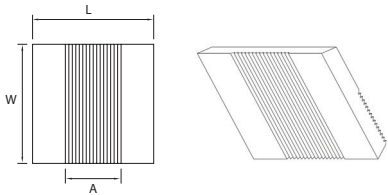
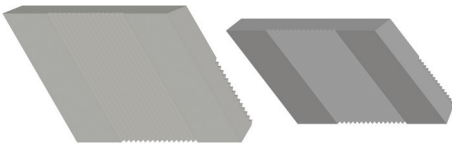
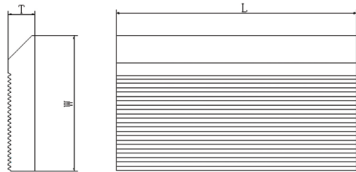
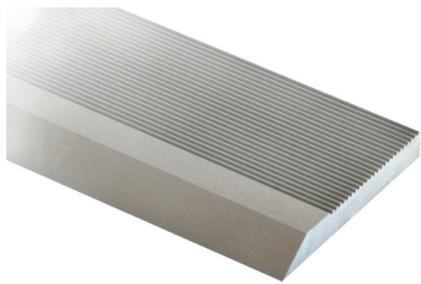
40 x 8mm

Length	Width	Thickness
55	40	8
65	40	8
90	40	8
110	40	8

50 x 8mm

Length	Width	Thickness
55	50	8
65	50	8
90	50	8
110	50	8

Other sizes available upon request.
Made to order.



Rougherhead Planing - WR

Application

- Coated knife steel.
- Suitable for Softwoods and Hardwoods.
- Cut to length in balanced pairs.

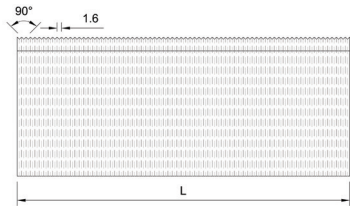
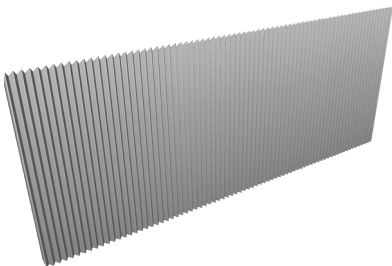
30 x 4mm

Length	Width	Thickness
100	30	4
130	30	4
150	30	4
180	30	4
230	30	4
330	30	4

50 x 4mm

Length	Width	Thickness
100	50	4
130	50	4
150	50	4
180	50	4
230	50	4
330	50	4

Other sizes available upon request.
Made to order.



Rougherhead Serrated - WR

Application

- Coated knife steel.
- Suitable for Softwoods and Hardwoods.
- Cut to length in balanced pairs.

40 x 6mm

Length	Width	Thickness
100	40	5
130	40	5
150	40	5
180	40	5
230	40	5
330	40	5

Made to order.
Other sizes available upon request.

40 x 8mm

Length	Width	Thickness
100	40	8
130	40	8
150	40	8
180	40	8
230	40	8
330	40	8

Made to order.
Other sizes available upon request.

40 x 6mm

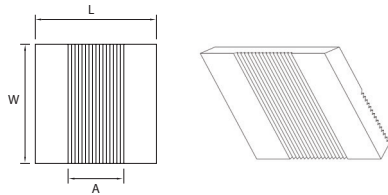
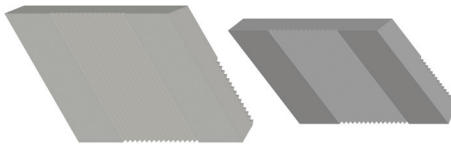
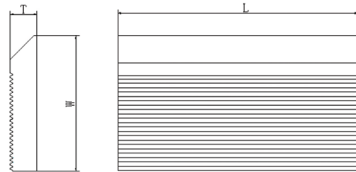
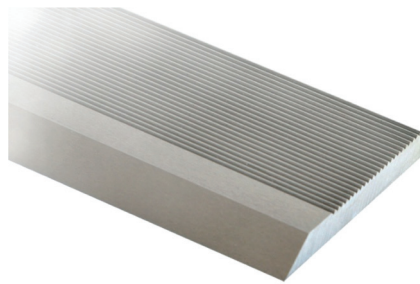
Length	Width	Thickness
100	50	5
130	50	5
150	50	5
180	50	5
230	50	5
330	50	5

Made to order.
Other sizes available upon request.

50 x 8mm

Length	Width	Thickness
100	50	5
130	50	5
150	50	5
180	50	5
230	50	5
330	50	5

Stock item.
Other sizes available upon request.



LV Knife

Application

- For use on Coastal, Newman Whitney and Gilbert planers.
- L style knife available for Stetson Ross.
- Other machine type knives also available.
- For cutterheads up to 28 wing.

Plain

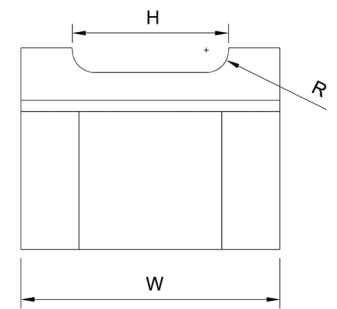
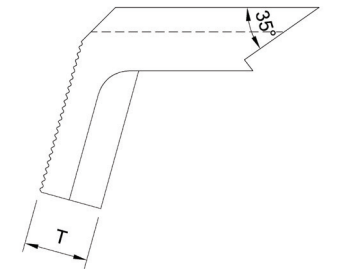
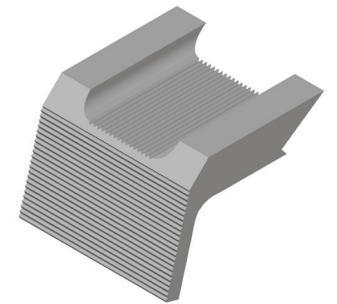
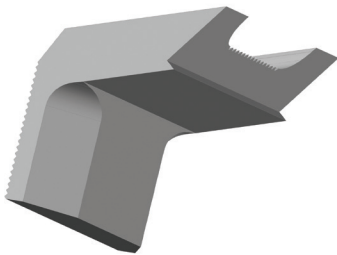
H	R	W	T
35	2	51	14
35	3	51	14
35	4	51	14
35	5	58	14
35	6	58	14
45	2	58	14
45	3	58	14
45	4	58	14
45	5	58	14
45	6	58	14

Made to order.

Rougherhead

H	R	W	T	A
35	2	51	14	25
35	3	51	14	25
35	4	51	14	25
35	5	58	14	25
35	6	58	14	25
45	2	58	14	35
45	3	58	14	35
45	4	58	14	35
45	5	58	14	35
45	6	58	14	35

Made to order.



Grind to Profile Service

The in house manual grind to profile process can take 3-4 hours. This time is increasingly more expensive to the business as your skilled operators are taken away from the production line. Although avoiding these costs altogether is tempting, it limits your product value and profitability. Allow our team of machinists to provide a solution for any application and realise your business' full potential with custom high value mouldings.

Our Grind to Profile Services:

- Work with various knife steel grades to suit a range of applications and can consult on the most suitable.
- Always supply a template and technical drawing for future sharpening.
- Can match existing profiles and rake angles.
- Can supply multiple balanced sets for long runs.
- Accommodate all timber species.

Our Machinists can create Profiles from:

- DXF files
- Timber Samples
- Drawings

All Accurate moulding knives are balanced before and after cutting, guaranteeing a balance accuracy to 0.1 grams.

Turnaround time for our Grind to Profile services is 2-3 days from drawing approval.

How our Grind to Profile Service works:

1. You send us a sample.
2. We send you a quote for your approval.
3. We create a drawing.
4. You approve drawing.
5. We produce a template and grind to profile knives.

